

# ABACO Orange Beach PHASE I

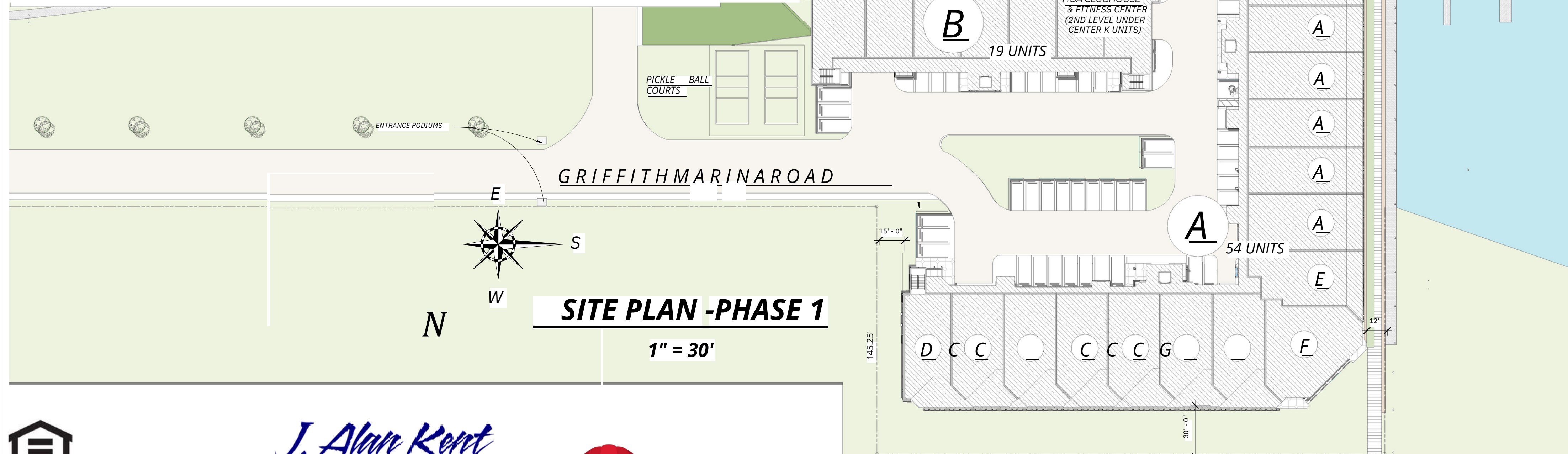
## PROJECT SUMMARY

### BLDG. B

19 UNITS -TOTAL  
 (13)K UNITS -3 BED/ 3 BATH (1540 SF)  
 (6)B UNITS -4 BED/ 3 BATH (1775 SF)

### BLDG. A

54 UNITS -TOTAL  
 (24)A UNITS -3 BED/ 3 BATH (1540 SF)  
 (3)H UNITS - 4 BED/ 4 BATH (2140 SF)  
 (3)E UNITS -3 BED/ 3 BATH (1575 SF)  
 (3)F UNITS - 4 BED/ 4 1/2 BATH (2125 SF)  
 (2)G UNITS -2 BED/ 2 1/2 BATH (1250 SF)  
 (1)J UNIT -2 BED/ 2 BATH (925 SF)  
 (15)C UNITS - 3 BED/ 3 1/2 BATH (1545 SF)  
 (3)D UNITS -4 BED/ 3 BATH (1595 SF)



"SUBJECT TO CHANGE"

"NEED NOT BE BUILT"



HENRY NORRIS  
&  
ASSOCIATES

ARCHITECTURE  
&  
ENVIRONMENTAL  
DESIGN

30 N. PALAFOX  
PENSACOLA, FL  
32502  
(850)432-6011  
FAX 435-9001

ABACO  
ORANGE BEACH

JOB #: Project Number  
CAD:  
CHECKED: HN  
DATE: 1-18-23

REVISIONS:

SEAL:

SHEET TITLE:  
PHASE 1 SITE PLAN

**A15**





HENRY NORRIS & ASSOCIATES

ARCHITECTURE & ENVIRONMENTAL DESIGN

30 N. PALAFOX  
PENSACOLA, FL  
32502  
(850)432-6011  
FAX 435-9001

ABACO  
ORANGE BEACH

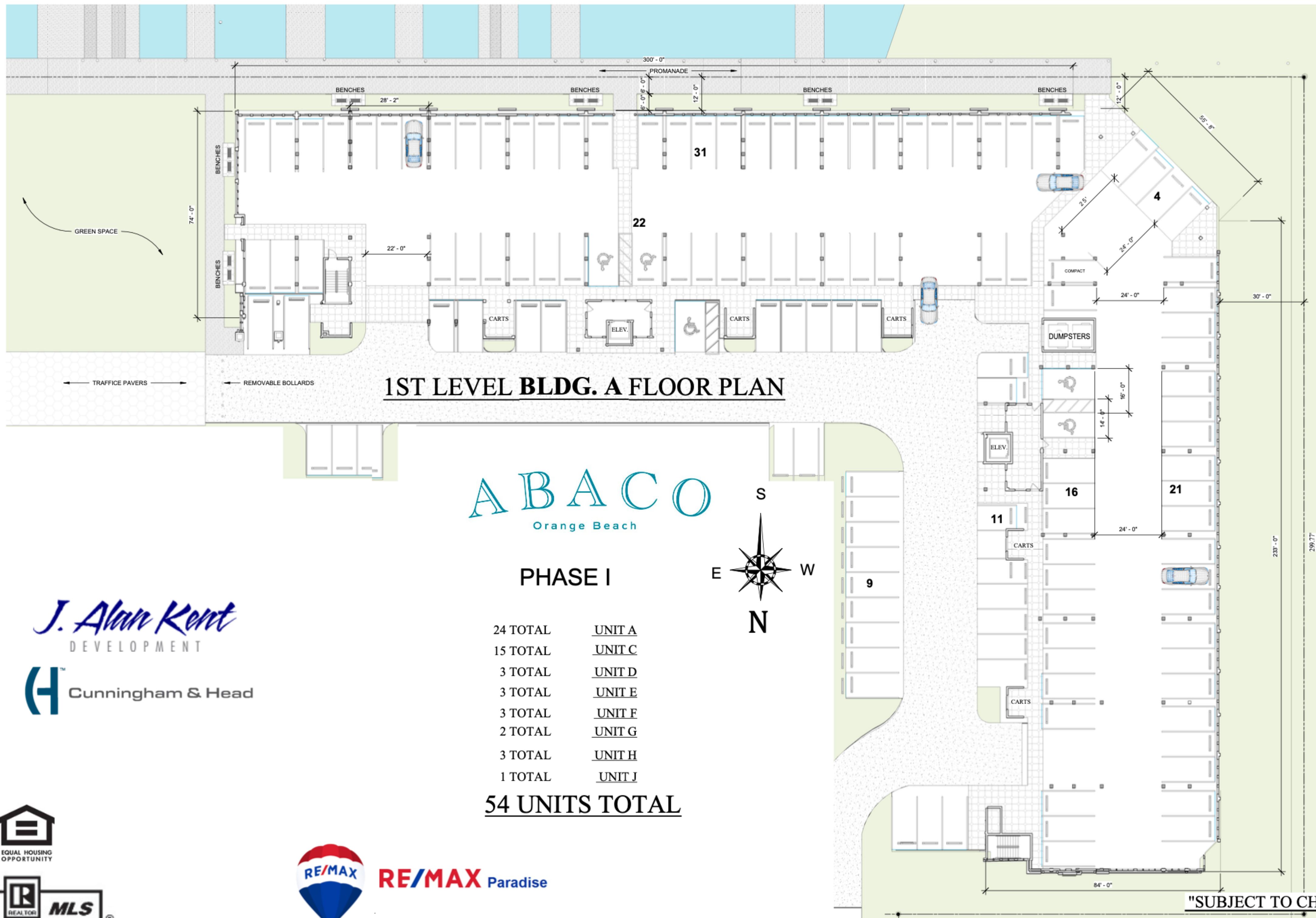
JOB #: Project Number  
CAD: CHECKED; HN  
DATE: 1-18-23

REVISIONS:

SEAL:

SHEET TITLE:  
BLDG. IV PLAN - LEVEL 1

A6



1ST LEVEL BLDG. A FLOOR PLAN

ABACO  
Orange Beach

PHASE I



- 24 TOTAL UNIT A
- 15 TOTAL UNIT C
- 3 TOTAL UNIT D
- 3 TOTAL UNIT E
- 3 TOTAL UNIT F
- 2 TOTAL UNIT G
- 3 TOTAL UNIT H
- 1 TOTAL UNIT J

54 UNITS TOTAL

J. Alan Kent  
DEVELOPMENT

Cunningham & Head



RE/MAX Paradise

"SUBJECT TO CHANGE"

"NEED NOT BE BUILT"





HENRY NORRIS & ASSOCIATES

ARCHITECTURE & ENVIRONMENTAL DESIGN

30 N. PALAFOX  
PENSACOLA, FL  
32502  
(850)432-6011  
FAX 435-9001

ABACO  
ORANGE BEACH

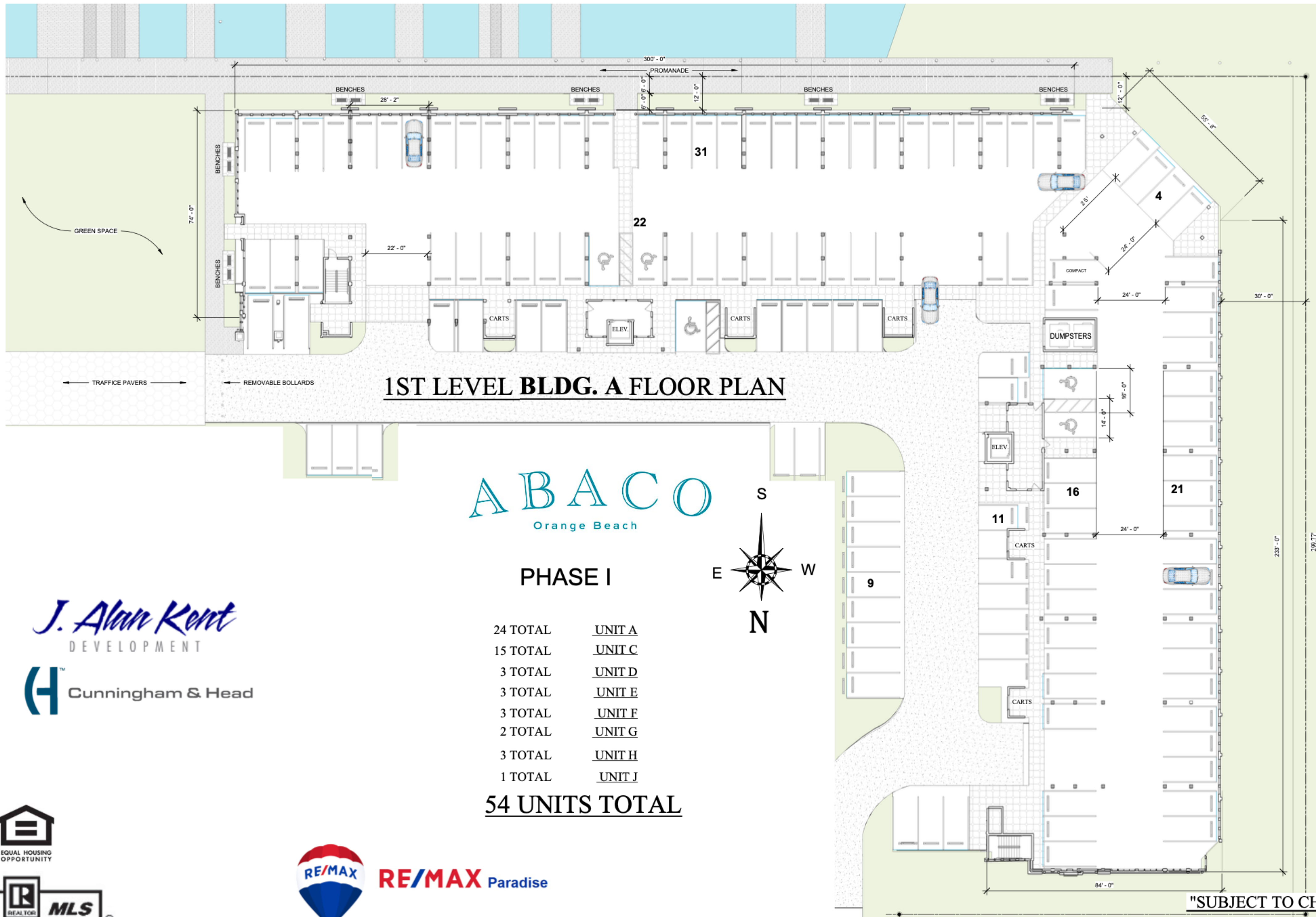
JOB #: Project Number  
CAD:  
CHECKED: HN  
DATE: 1-18-23

REVISIONS:

SEAL:

SHEET TITLE:  
BLDG. IV PLAN - LEVEL 1

A6



1ST LEVEL BLDG. A FLOOR PLAN

ABACO  
Orange Beach

PHASE I



- 24 TOTAL UNIT A
- 15 TOTAL UNIT C
- 3 TOTAL UNIT D
- 3 TOTAL UNIT E
- 3 TOTAL UNIT F
- 2 TOTAL UNIT G
- 3 TOTAL UNIT H
- 1 TOTAL UNIT J

54 UNITS TOTAL

J. Alan Kent  
DEVELOPMENT

Cunningham & Head

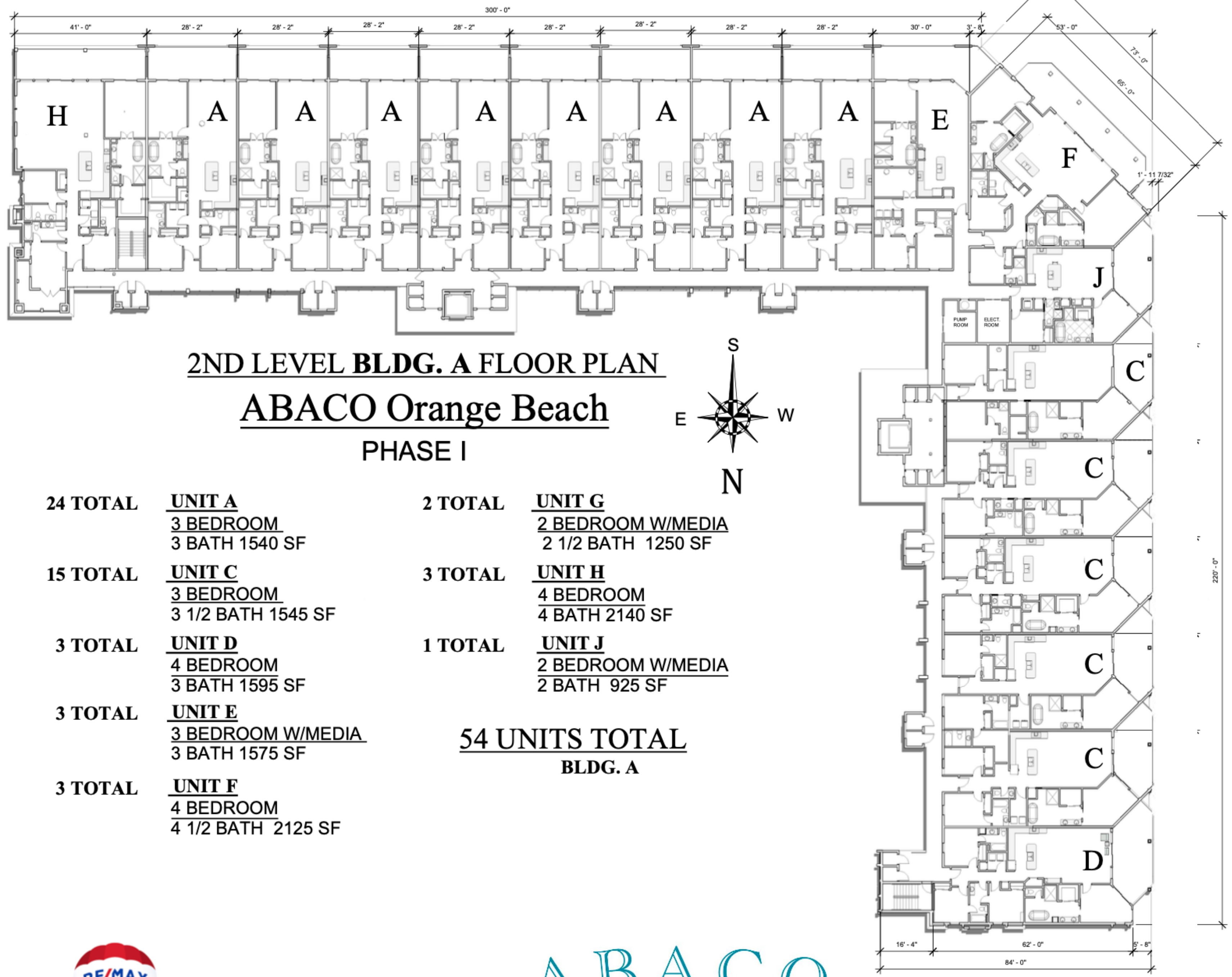


RE/MAX Paradise

"SUBJECT TO CHANGE"

"NEED NOT BE BUILT"





**2ND LEVEL BLDG. A FLOOR PLAN**  
**ABACO Orange Beach**  
**PHASE I**

<b>24 TOTAL</b>	<b>UNIT A</b> 3 BEDROOM 3 BATH 1540 SF	<b>2 TOTAL</b>	<b>UNIT G</b> 2 BEDROOM W/MEDIA 2 1/2 BATH 1250 SF
<b>15 TOTAL</b>	<b>UNIT C</b> 3 BEDROOM 3 1/2 BATH 1545 SF	<b>3 TOTAL</b>	<b>UNIT H</b> 4 BEDROOM 4 BATH 2140 SF
<b>3 TOTAL</b>	<b>UNIT D</b> 4 BEDROOM 3 BATH 1595 SF	<b>1 TOTAL</b>	<b>UNIT J</b> 2 BEDROOM W/MEDIA 2 BATH 925 SF
<b>3 TOTAL</b>	<b>UNIT E</b> 3 BEDROOM W/MEDIA 3 BATH 1575 SF	<b>54 UNITS TOTAL</b> <b>BLDG. A</b>	
<b>3 TOTAL</b>	<b>UNIT F</b> 4 BEDROOM 4 1/2 BATH 2125 SF		

*J. Alan Kerst*  
DEVELOPMENT

**C** Cunningham & Head



**RE/MAX** Paradise

**ABACO**  
Orange Beach



HENRY NORRIS & ASSOCIATES

ARCHITECTURE & ENVIRONMENTAL DESIGN

30 N. PALAFOX  
PENSACOLA, FL  
32502  
(850)432-6011  
FAX 435-9001

ABACO  
ORANGE BEACH

JOB #: Project Number  
CAD: [blank]  
CHECKED: HN  
DATE: 1-18-23

REVISIONS:

SEAL:

SHEET TITLE:  
BLDG. IV PLAN - Level 2

**A7**

"SUBJECT TO CHANGE"  
"NEED NOT BE BUILT"





HENRY NORRIS & ASSOCIATES

ARCHITECTURE & ENVIRONMENTAL DESIGN

30 N. PALAFOX  
PENSACOLA, FL  
32502  
(850)432-6011  
FAX 435-9001

ABACO  
ORANGE BEACH

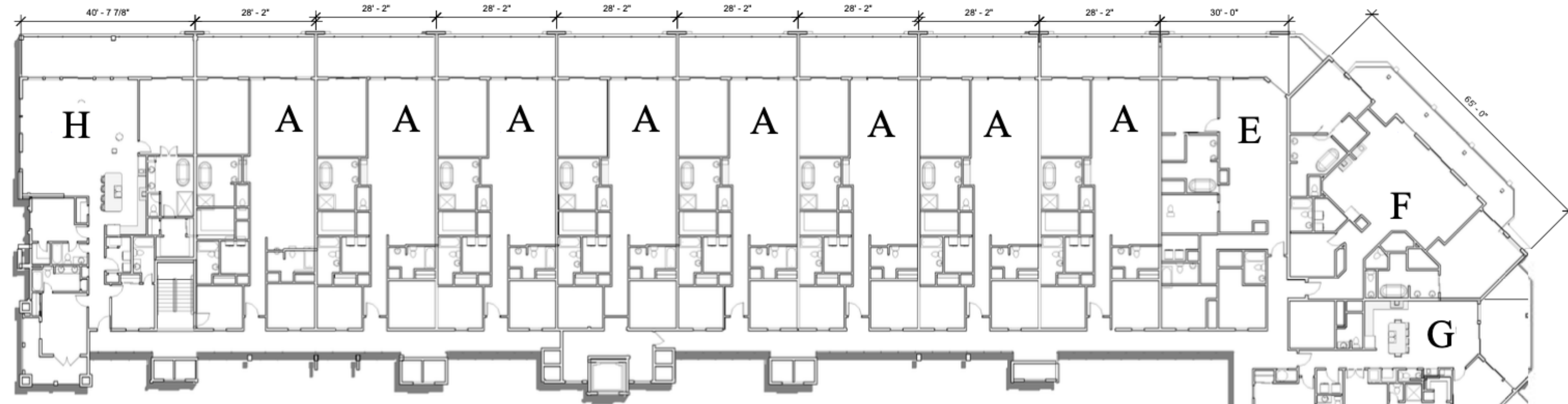
JOB #: Project Number  
CAD: CHECKED; HN  
DATE: 1-18-23

REVISIONS:

SEAL:

SHEET TITLE:  
BLDG. IV PLAN - Level 3

A8



**3RD LEVEL BLDG. A FLOOR PLAN PHASE I**

**ABACO Orange Beach**

- |                 |  |   |  |
|-----------------|--|---|--|
| <b>24 TOTAL</b> | <b>UNIT A</b><br>3 BEDROOM<br>3 BATH 1540 SF         | <b>2 TOTAL</b>                          | <b>UNIT G</b><br>2 BEDROOM W/MEDIA<br>2 1/2 BATH 1250 SF |
| <b>15 TOTAL</b> | <b>UNIT C</b><br>3 BEDROOM<br>3 1/2 BATH 1545 SF     | <b>3 TOTAL</b>                          | <b>UNIT H</b><br>4 BEDROOM<br>4 BATH 2140 SF             |
| <b>3 TOTAL</b>  | <b>UNIT D</b><br>4 BEDROOM<br>3 BATH 1595 SF         | <b>1 TOTAL</b>                          | <b>UNIT J</b><br>2 BEDROOM W/MEDIA<br>2 BATH 925 SF      |
| <b>3 TOTAL</b>  | <b>UNIT E</b><br>3 BEDROOM W/MEDIA<br>3 BATH 1575 SF | <b>54 UNITS TOTAL</b><br><b>BLDG. A</b> |  |
| <b>3 TOTAL</b>  | <b>UNIT F</b><br>4 BEDROOM<br>4 1/2 BATH 2125 SF     |   |  |

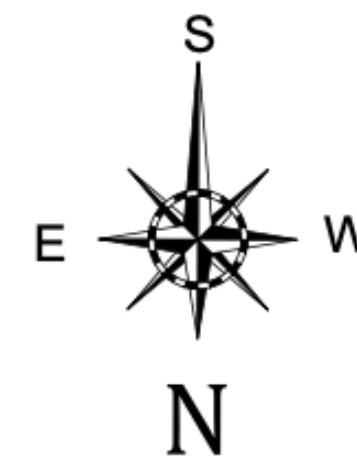
*J. Alan Kerst*  
DEVELOPMENT

**C** Cunningham & Head



**RE/MAX** Paradise

ABACO  
Orange Beach



"SUBJECT TO CHANGE"

"NEED NOT BE BUILT"





HENRY NORRIS & ASSOCIATES

ARCHITECTURE & ENVIRONMENTAL DESIGN

30 N. PALAFOX  
PENSACOLA, FL  
32502  
(850)432-6011  
FAX 435-9001

ABACO  
ORANGE BEACH

JOB #: Project Number  
CAD:  
CHECKED; HN  
DATE: 1-18-23

REVISIONS:

SEAL:

SHEET TITLE:  
4TH LEVEL PLAN - BLDG 4

A9



**4TH LEVEL BLDG. A FLOOR PLAN PHASE I**

**ABACO Orange Beach**

24 TOTAL **UNIT A**  
3 BEDROOM  
3 BATH 1540 SF

15 TOTAL **UNIT C**  
3 BEDROOM  
3 1/2 BATH 1545 SF

3 TOTAL **UNIT D**  
4 BEDROOM  
3 BATH 1595 SF

3 TOTAL **UNIT E**  
3 BEDROOM W/MEDIA  
3 BATH 1575 SF

3 TOTAL **UNIT F**  
4 BEDROOM  
4 1/2 BATH 2125 SF

2 TOTAL **UNIT G**  
2 BEDROOM W/MEDIA  
2 1/2 BATH 1250 SF

3 TOTAL **UNIT H**  
4 BEDROOM  
4 BATH 2140 SF

1 TOTAL **UNIT J**  
2 BEDROOM W/MEDIA  
2 BATH 925 SF

**54 UNITS TOTAL**  
**BLDG. A**



RE/MAX Paradise

"SUBJECT TO CHANGE"

"NEED NOT BE BUILT"





HENRY NORRIS  
&  
ASSOCIATES

ARCHITECTURE  
&  
ENVIRONMENTAL  
DESIGN

30 N. PALAFOX  
PENSACOLA, FL  
32502  
(850)432-6011  
FAX 435-9001

ABACO  
ORANGE BEACH

JOB #: Project Number  
CAD:  
CHECKED: HN  
DATE: 3-30-23

REVISIONS:

SEAL:

SHEET TITLE:  
BLDGA & B ELEVATIONS

**A 11**



BLDG. A - EAST ELEVATION

BLDG. B EAST ELEVATION



BLDG. A - SOUTH ELEVATION



*J. Alan Kent*  
DEVELOPMENT

**C** Cunningham & Head



**RE/MAX** Paradise

ABACO  
Orange Beach

"SUBJECT TO CHANGE"

**"NEED NOT BE BUILT"**





HENRY NORRIS  
&  
ASSOCIATES

ARCHITECTURE  
&  
ENVIRONMENTAL  
DESIGN

30 N. PALAFOX  
PENSACOLA, FL  
32502  
(850)432-6011  
FAX 435-9001

ABACO  
ORANGE BEACH

JOB #: Project Number  
CAD:  
CHECKED: HN  
DATE: 1-18-23

REVISIONS:

SEAL:

SHEET TITLE:  
BLDG. 4 ELEVATIONS

**A18**



**BLDG.A - NORTH ELEVATION**



**BLDG. A - WEST ELEVATION**

*J. Alan Kent*  
DEVELOPMENT

**C** Cunningham & Head

ABACO  
Orange Beach



"SUBJECT TO CHANGE"

"NEED NOT BE BUILT"