

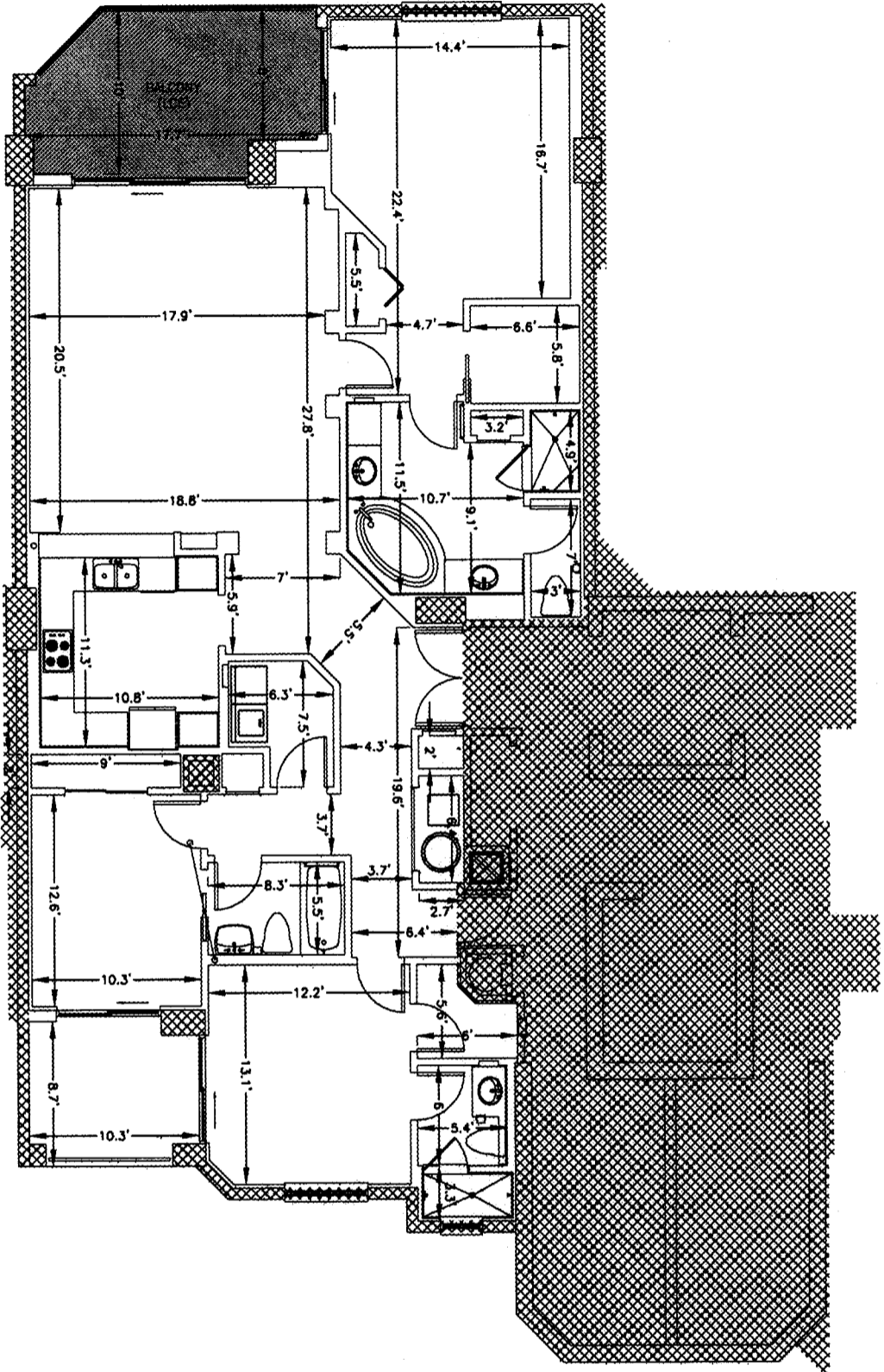
The drawing is the property of Hatch Mott MacDonald Florida, LLC, and may not be reproduced without written permission.



OR BK 5519 PG1282
 Escambia County, Florida
 INSTRUMENT 2004-299279

INDIGO CONDOMINIUM

(PHASE I)
 FLOORS 3 - 20
 TYPICAL UNIT 05

- 305-E
- 405-E
- 505-E
- 605-E
- 705-E
- 805-E
- 905-E
- 1005-E
- 1105-E
- 1205-E
- 1405-E
- 1505-E
- 1605-E
- 1705-E
- 1805-E
- 1905-E
- 2005-E



 COMMON ELEMENT
 LIMITED COMMON ELEMENT TO APPORTMENTMENT RESIDENTIAL UNIT

UNLESS ACCOMPANIED BY A SIGNED AND SEALED SHEET 1, THEN THIS DRAWING, SKETCH, PLAN, MAP OR DESCRIPTION IS FOR INFORMATIONAL PURPOSES ONLY AND IS NOT VALID.

 Hatch Mott MacDonald	Hatch Mott MacDonald Florida, LLC Architects Engineers Surveyors Certified of Architecture: LB - 0006783 5111 North 12th Avenue (25004) / P. O. Box 2518 (2512518) Pensacola, Florida Telephone: (904) 949-0811 • Fax: (904) 444-5199	DESIGNED BY: G. EDWARDS	PROJECT SUPERVISOR: R.S. COLOCADO	DATE: 09-14-2004	H.M.M. PROJECT NUMBER:	SHEET: 18 OF 23
			PROJECT MANAGER: M. BONIFAY	LAST REVISED:	201910	