

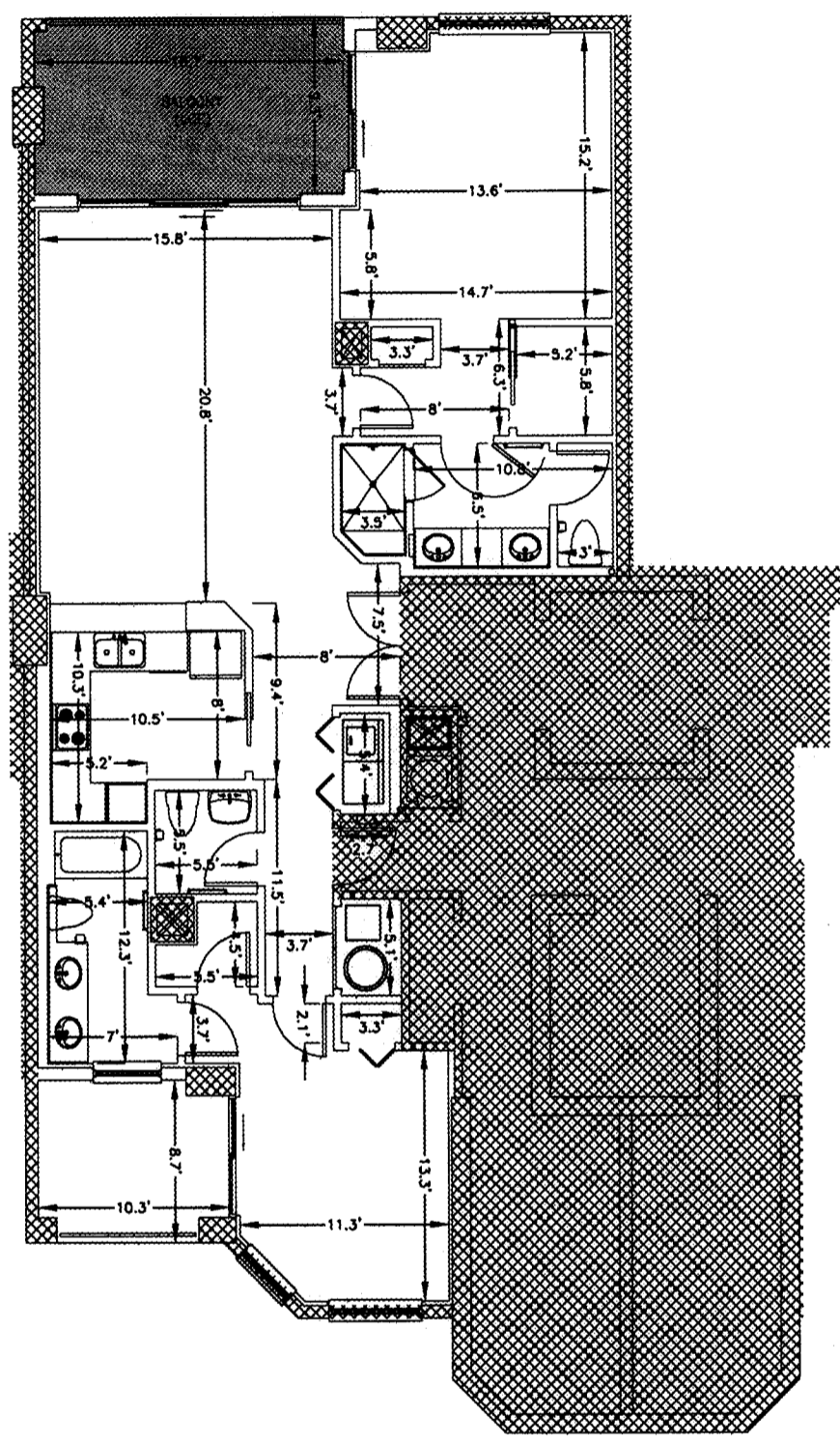
This drawing is the property of Hatch Mott MacDonald Florida, LLC, and may not be reproduced without written permission.

OR BK 5519 P61280
 Escambia County, Florida
 INSTRUMENT 2004-299279

INDIGO CONDOMINIUM

**(PHASE I)
 FLOORS 3 - 20
 TYPICAL UNIT 03**

- 303-E
- 403-E
- 503-E
- 603-E
- 703-E
- 803-E
- 903-E
- 1003-E
- 1103-E
- 1203-E
- 1403-E
- 1503-E
- 1603-E
- 1703-E
- 1803-E
- 1903-E
- 2003-E



UNLESS ACCOMPANIED BY A SIGNED AND SEALED SHEET 1, THEN THIS DRAWING, SKETCH, PLAT, MAP OR DESCRIPTION IS FOR INFORMATIONAL PURPOSES ONLY AND IS NOT VALID.

 = COMMON ELEMENT
 = LIMITED COMMON ELEMENT TO APURTENANT RESIDENTIAL UNIT

Hatch Mott MacDonald

Hatch Mott MacDonald Florida, LLC
 Architects Engineers Surveyors
 Certificate of Authorization: LB - 000873
 5111 North 12th Avenue (25004) / P. O. Box 2518 (25152518)
 Pensacola, Florida
 Telephone: (904) 464-0711 • Fax: (904) 464-4718

DESIGNED BY: **G. EDWARDS**
 DRAWN BY:

PROJECT SUPERVISOR: **R.S. COLOCADO**
 PROJECT MANAGER: **M. BONIFAY**

DATE: **09-14-2004**
 LAST REVISED:

H.M.M.
 PROJECT NUMBER: **201910**

PROJECT:	INDIGO, A CONDOMINIUM PERDIDO KEY ESCAMBIA COUNTY, FLORIDA
TITLE:	PHASE I - BUILDING 1 FLOORS 3-20 TYPICAL UNIT 03 303-E - 2003-E
SHEET:	16 OF 23