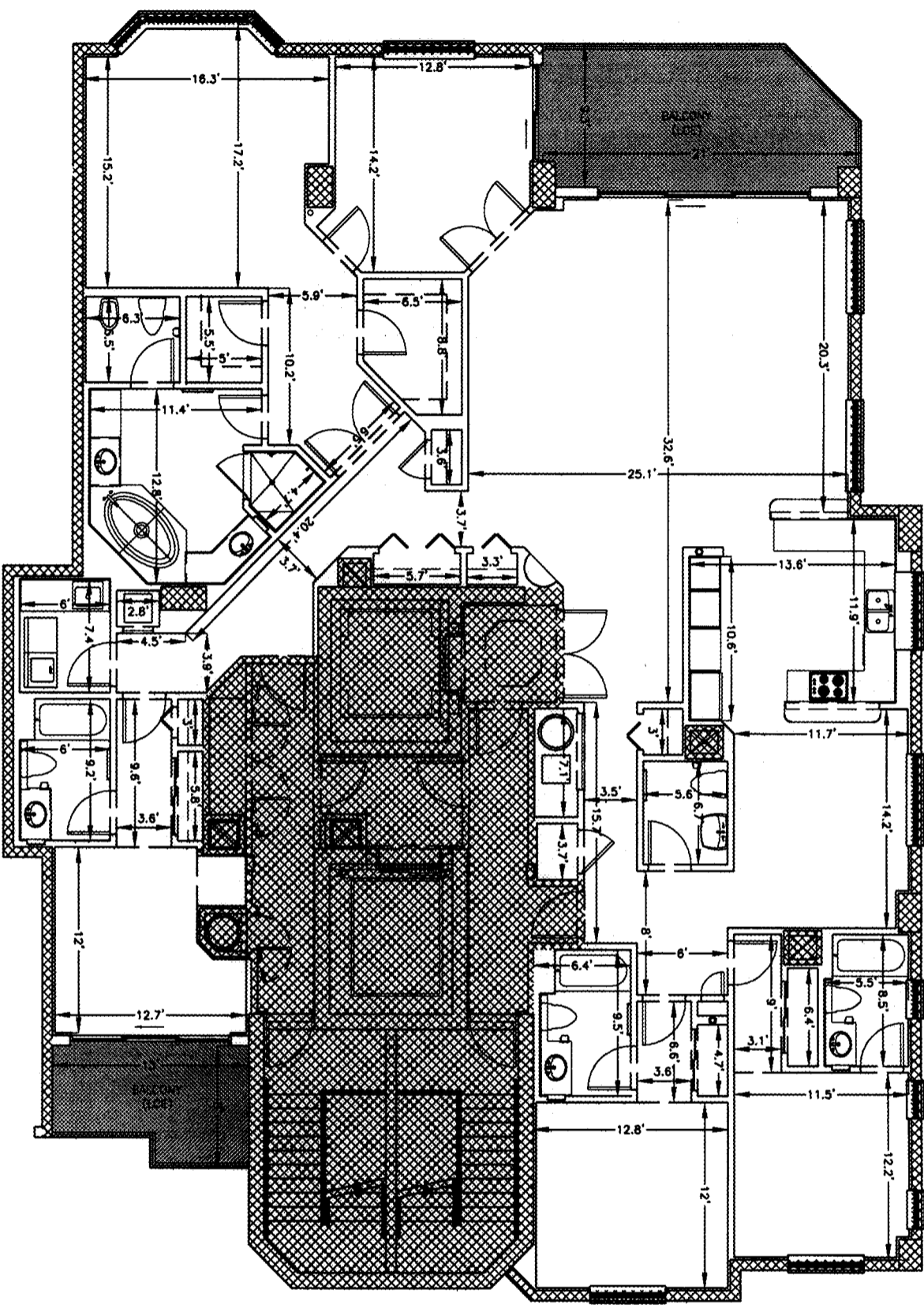




OR BK 5519 PG1287  
 Escambia County, Florida  
 INSTRUMENT 2004-299279



 = COMMON ELEMENT  
 = UNITED COMMON ELEMENT TO APARTMENT RESIDENTIAL UNIT

**Hatch Mott MacDonald**

**Hatch Mott MacDonald Florida, LLC**  
 Architects Engineers Surveyors  
 Certificate of Authorization: LB-0006783  
 9111 North 12th Avenue (22204) / P. O. Box 2518 (22513-2518)  
 Panama City, Florida  
 Telephone: (909) 464-4011 • Fax: (909) 464-4104

DESIGNED BY:  
 DRAWN BY:

G. EDWARDS

PROJECT SUPERVISOR:  
 PROJECT MANAGER:

R.S. COLOCADO  
 M. BONIFAY

DATE: 09-14-2004  
 LAST REVISED:

H.M.M.  
 PROJECT NUMBER:

201910

SHEET:  
 23 OF 23

UNLESS ACCOMPANIED BY A SIGNED AND SEALED SHEET 1, THEN THIS DRAWING, SKETCH, PLAN, MAP OR DESCRIPTION IS FOR INFORMATIONAL PURPOSES ONLY AND IS NOT VALID.

**INDIGO CONDOMINIUM  
 (PHASE I)  
 PENTHOUSE  
 FLOOR 21  
 PH-2104-E**



PROJECT: INDIGO, A CONDOMINIUM  
 PERDIDO KEY,  
 ESCAMBIA COUNTY, FLORIDA  
 TITLE: PHASE I - BUILDING 1  
 PENTHOUSE - FLOOR 21  
 PH-2104-E