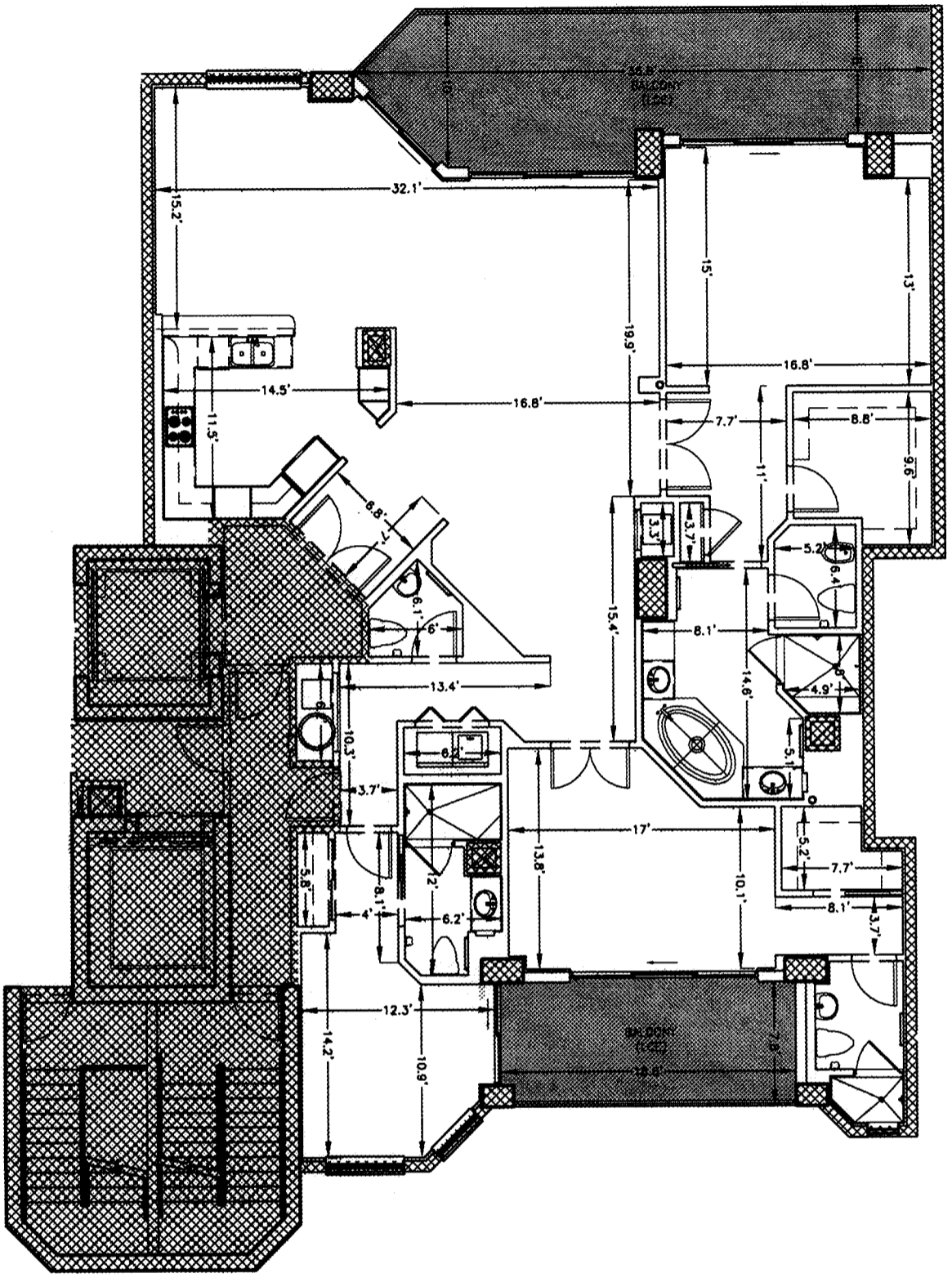


DR BK 5519 PG1286
 Escambia County, Florida
 INSTRUMENT 2004-299279



= COMMON ELEMENT
 = LIMITED COMMON ELEMENT TO APARTMENT RESIDENTIAL UNIT

UNLESS ACCOMPANIED BY A SIGNED AND SEALED SHEET 1, THEN THIS DRAWING, SKETCH, PLAN, MAP OR DESCRIPTION IS FOR INFORMATIONAL PURPOSES ONLY AND IS NOT VALID.

Hatch Mott MacDonald

Hatch Mott MacDonald Florida, LLC
 Architects Engineers Surveyors
 Certificate of Authorization: LB - 0008703
 8111 North 12th Avenue (22204) / P. O. Box 2618 (2213-2618)
 Pensacola, Florida
 Telephone: (850) 464-4371 • Fax: (850) 464-4189

DESIGNED BY: G. EDWARDS
 DRAWN BY:

PROJECT SURVEYOR: R.S. COLOCADO
 PROJECT MANAGER: M. BONIFAY

DATE: 09-14-2004
 LAST REVISED:

H.M.M. PROJECT NUMBER: 201910

SHEET: 22 OF 23

PROJECT: INDIGO, A CONDOMINIUM
 PERDIDO KEY
 ESCAMBIA COUNTY, FLORIDA
 TITLE: PHASE 1 - BUILDING 1
 PENTHOUSE - FLOOR 21
 PH-2103-E

INDIGO CONDOMINIUM
 (PHASE 1)
 PENTHOUSE
 FLOOR 21
 PH-2103-E

Scale: 1" = 10'