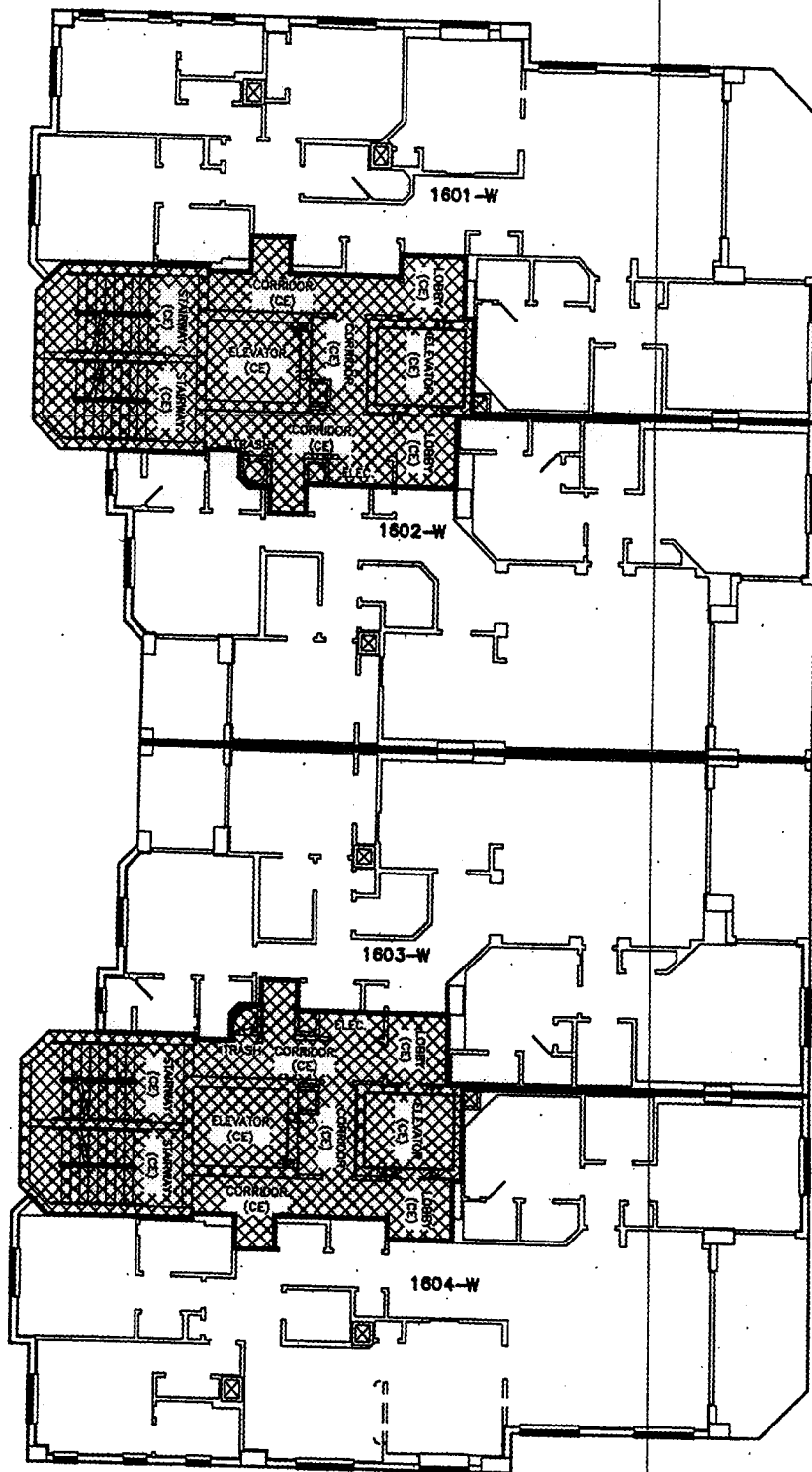
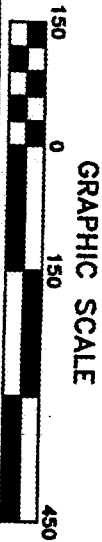


OR BK 5519 PG1304
Escambia County, Florida
INSTRUMENT 2004-299279



Indigo, A Condominium
BUILDING 2 - FLOOR 16

CKCG Project# 201910
Date: 10-31-02 Scale= GRAPHIC

Revised: 07-21-04 Sheet 42 of 50

Carlson Killam Consulting Group, Inc.
a division of Hatch Mott MacDonald Group, Inc.

Architects Engineers Surveyors

AAC000035 EB0000155 B00000783

5111 N. 12TH AVENUE

P.O. BOX 2518 PENSACOLA, FL 32513-2518

