

*Plats and Plans  
Sanibel, A condominium*

**PPT BOOK**  
**Page 34-6c**

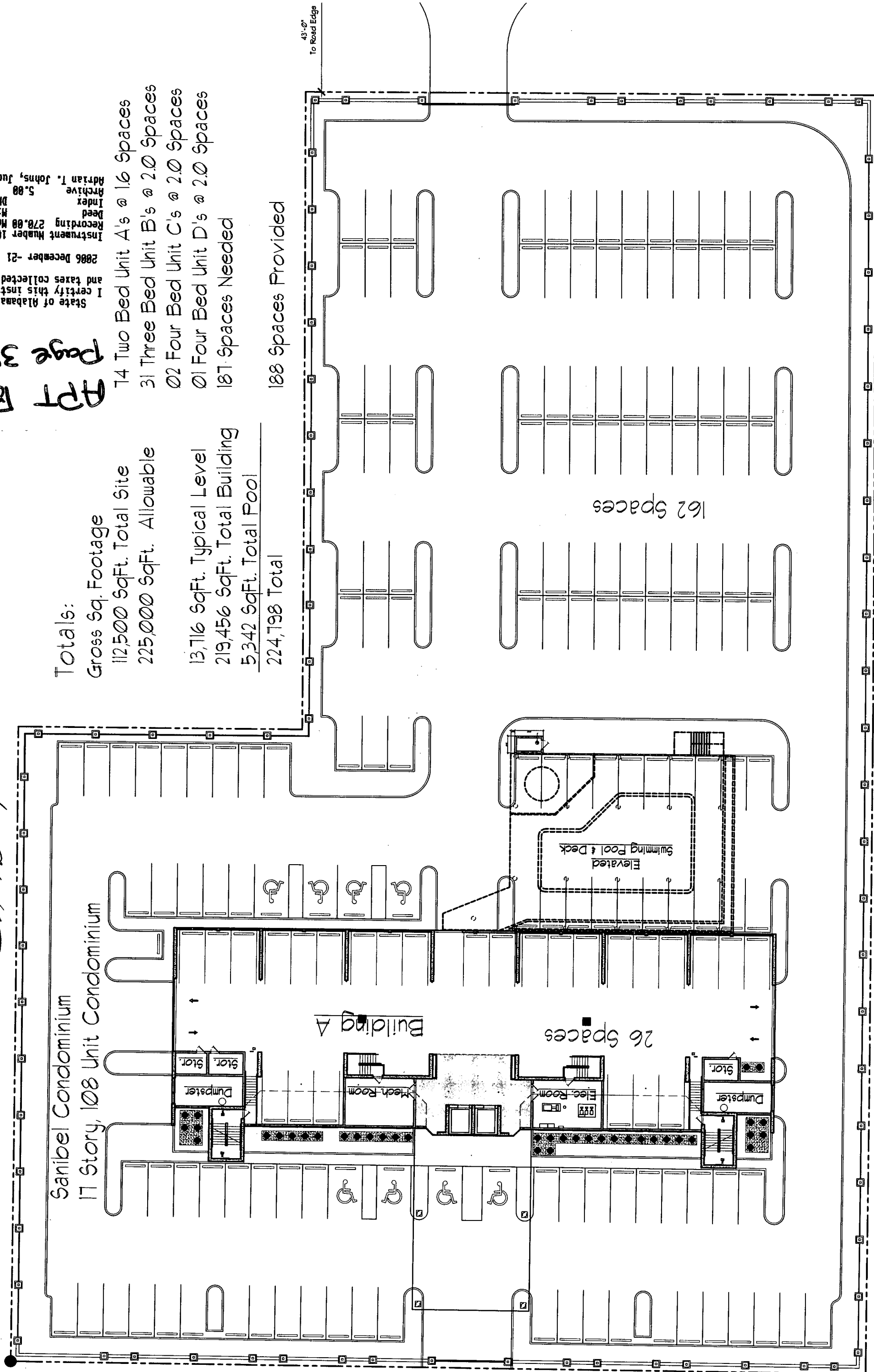
State of Alabama, Baldwin County  
I certify this instrument was filed  
and taxes collected on:  
2006 December -21 4:18PM  
Instrument Number 1021251 Pages 27  
Recording 270.00 Mortgage  
Deed  
Index  
Archive 5.00  
Adrian T. Johns, Judge of Probate

**Totals:**  
Gross Sq. Footage  
112,500 SqFt. Total Site  
225,000 SqFt. Allowable

13,716 SqFt. Typical Level  
219,456 SqFt. Total Building  
5,342 SqFt. Total Pool  
224,798 Total

188 Spaces Provided

14 Two Bed Unit A's @ 1.6 Spaces  
31 Three Bed Unit B's @ 2.0 Spaces  
02 Four Bed Unit C's @ 2.0 Spaces  
01 Four Bed Unit D's @ 2.0 Spaces  
187 Spaces Needed



THE UNDERSIGNED, HENRY NORRIS, A REGISTERED ARCHITECT IN THE STATE OF ALABAMA, REGISTRATION NUMBER 2888, PURSUANT TO SECTION 36-6-208 CODE OF ALABAMA, HAS PREPARED THESE PLANS TO BE SUBMITTED TO THE COMMISSIONER OF REVENUE AND FINANCE TO OBTAIN A CONDOMINIUM REGISTRATION NUMBER. THESE PLANS ARE ATTACHED TO AND MAKE PART OF THE REGISTRATION OF CONDOMINIUM OF SANIBEL, A CONDOMINIUM. CONTAINS ALL INFORMATION REQUIRED BY SAID CODE OF ALABAMA. THE ARCHITECT HAS NOT BEEN ADVISED BY THE ARCHITECTS BOARD OF PROFESSIONAL CONDUCT OF ANY VIOLATION OF THE ETHICS OF THE ARCHITECTURE ACT OR ANY OTHER APPLICABLE LAW OR REGULATION. THE ARCHITECT HAS NOT BEEN ADVISED BY THE ARCHITECTS BOARD OF PROFESSIONAL CONDUCT OF ANY VIOLATION OF THE ETHICS OF THE ARCHITECTURE ACT OR ANY OTHER APPLICABLE LAW OR REGULATION. THE ARCHITECT HAS NOT BEEN ADVISED BY THE ARCHITECTS BOARD OF PROFESSIONAL CONDUCT OF ANY VIOLATION OF THE ETHICS OF THE ARCHITECTURE ACT OR ANY OTHER APPLICABLE LAW OR REGULATION.

*Henry Norris* 12/22/06  
DATE

**Architectural Site Plan**  
1/16"=1'-0"