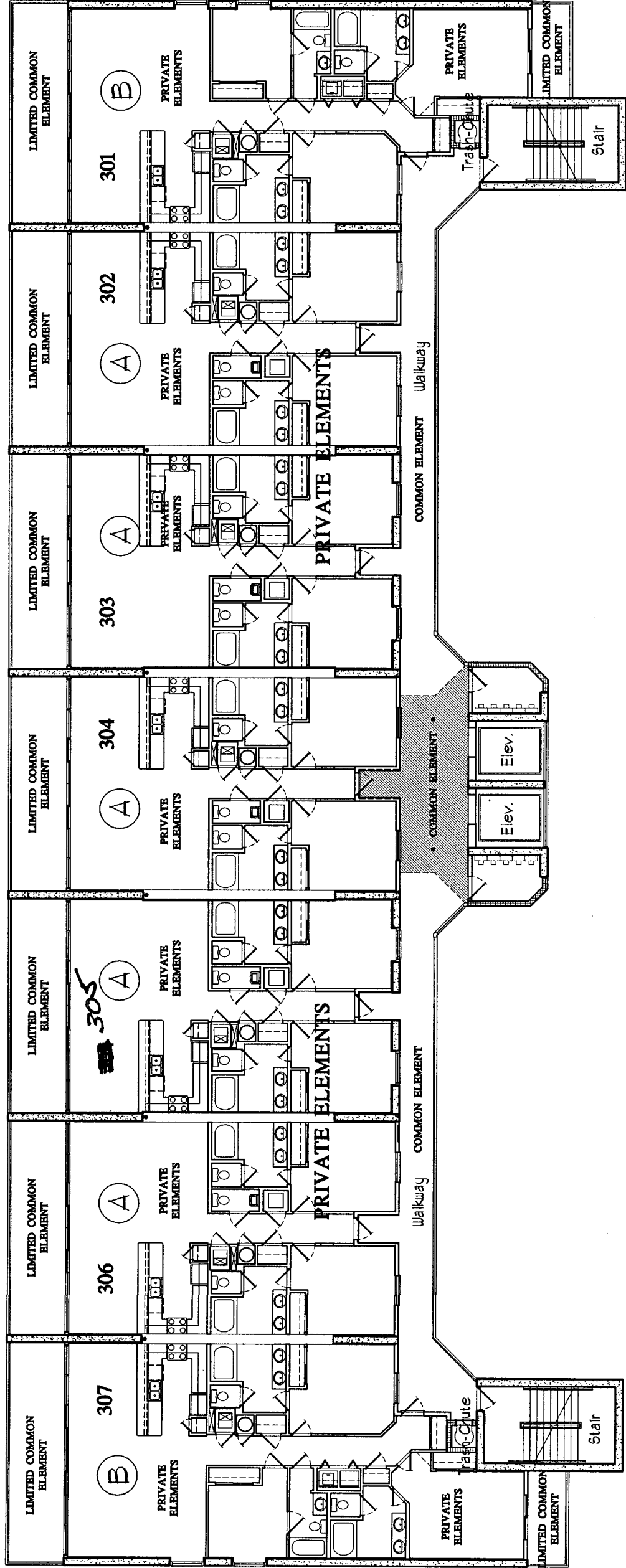
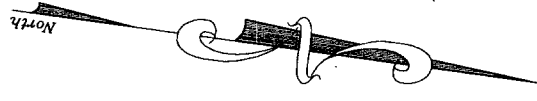


THE UNDERSIGNED, HENRY NORRIS, A REGISTERED ARCHITECT IN THE STATE OF ALABAMA, REGISTRATION NUMBER 2868, PURSUANT TO SECTION 34-6A-203, CODE OF ALABAMA, HEREBY CERTIFIES THAT TO THE BEST OF HIS KNOWLEDGE, DRAWINGS CONSISTING OF THIS SET OF ARCHITECTURAL DRAWINGS FOR THE SANIBEL CONDOMINIUM, FULLY AND ACCURATELY DEPICT THE LAYOUT, LOCATION, UNIT NUMBERS AND DIMENSIONS OF THE COMMON ELEMENTS AND PRIVATE ELEMENTS COMPRISING SUCH UNITS OF SAID CONDOMINIUM AS BUILT. ALABAMA REGISTRATION NUMBER 2868 DATE: 12/20/04



Typical Building Level 03 N.T.S.

NOTE: ALL RESIDENTIAL UNIT BALCONIES ARE TO BE LIMITED COMMON ELEMENT ALL RESIDENTIAL UNITS ARE TO BE PRIVATE ELEMENT ALL WALKWAYS ARE TO BE COMMON ELEMENT ALL OTHER AREAS TO BE COMMON ELEMENT UNLESS OTHERWISE NOTED



APT Book 05 page 40