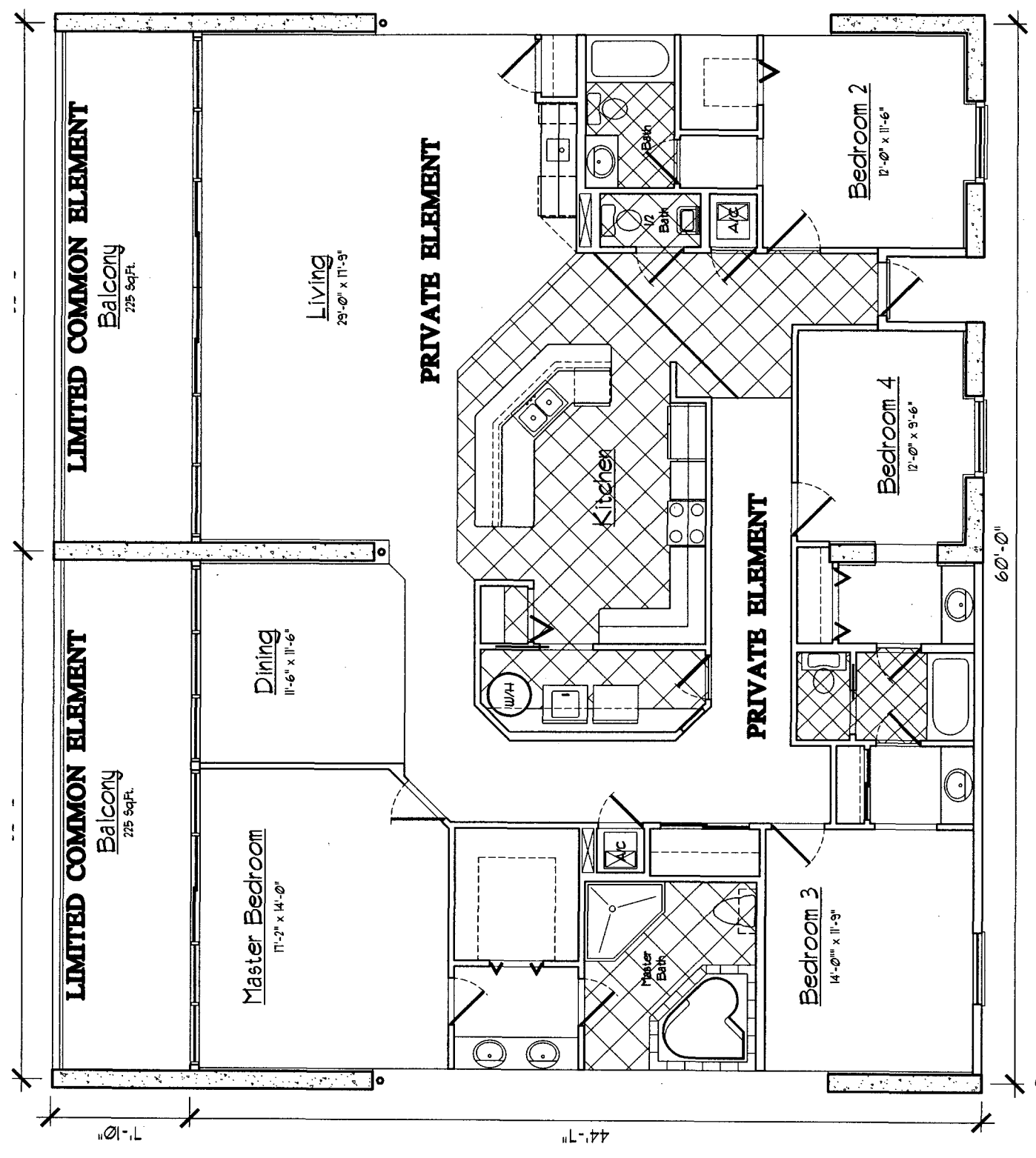


NOTE:
ALL RESIDENTIAL UNIT BALCONIES ARE TO BE LIMITED COMMON ELEMENT
ALL RESIDENTIAL UNITS ARE TO BE PRIVATE ELEMENT
ALL WALKWAYS ARE TO BE COMMON ELEMENT
ALL OTHER AREAS TO BE COMMON ELEMENT UNLESS OTHERWISE NOTED



THE UNDERSIGNED, HENRY NORRIS, A REGISTERED ARCHITECT IN THE STATE OF ALABAMA, HEREBY CERTIFIES THAT TO THE BEST OF HIS KNOWLEDGE, THE DRAWINGS CONSISTING OF PAGES 1 THROUGH 28 INCLUDE, ATTACHED TO AND MADE PART OF THE DECLARATION OF UNIT OWNERSHIP, ALL INFORMATION NECESSARY TO CONVEY TO THE BUYER A CLEAR AND ACCURATE SECTION, FULLY AND ACCURATELY DEPICT THE LAYOUT, LOCATION, UNIT NUMBERS AND APPROXIMATE DIMENSIONS IN SUFFICIENT DETAIL TO IDENTIFY THE COMMON ELEMENTS, LIMITED COMMON ELEMENTS AND PRIVATE ELEMENTS COMPRISING SUCH UNITS OF BANBEL CONDOMINIUM UNIT C.

Henry Norris
DATE: 12/01/04

Typ 4 Bedroom Unit 2,544sf (Unit C)
N.T.S. UNITS: 202 203

APT Book 25 page 56