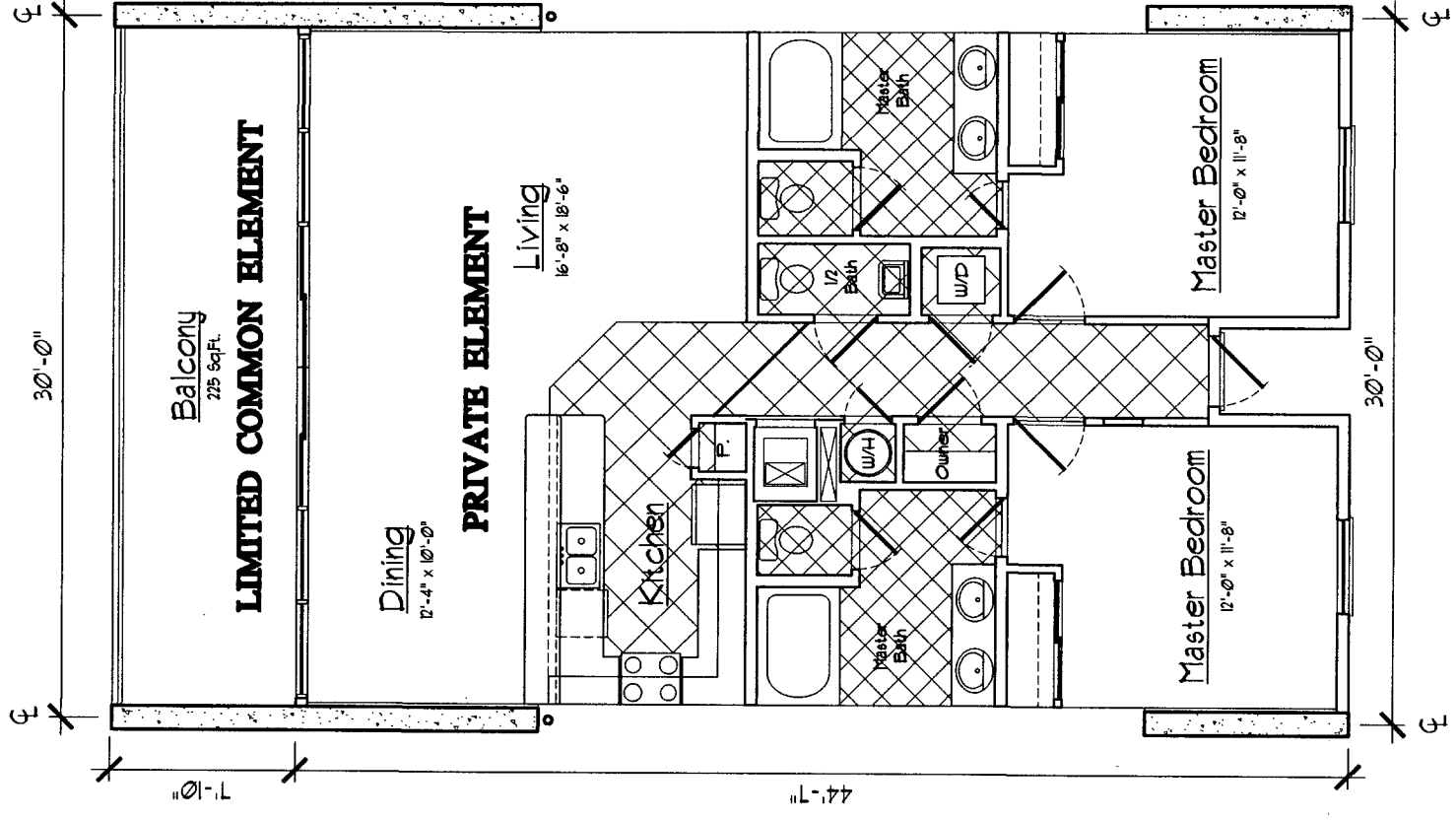
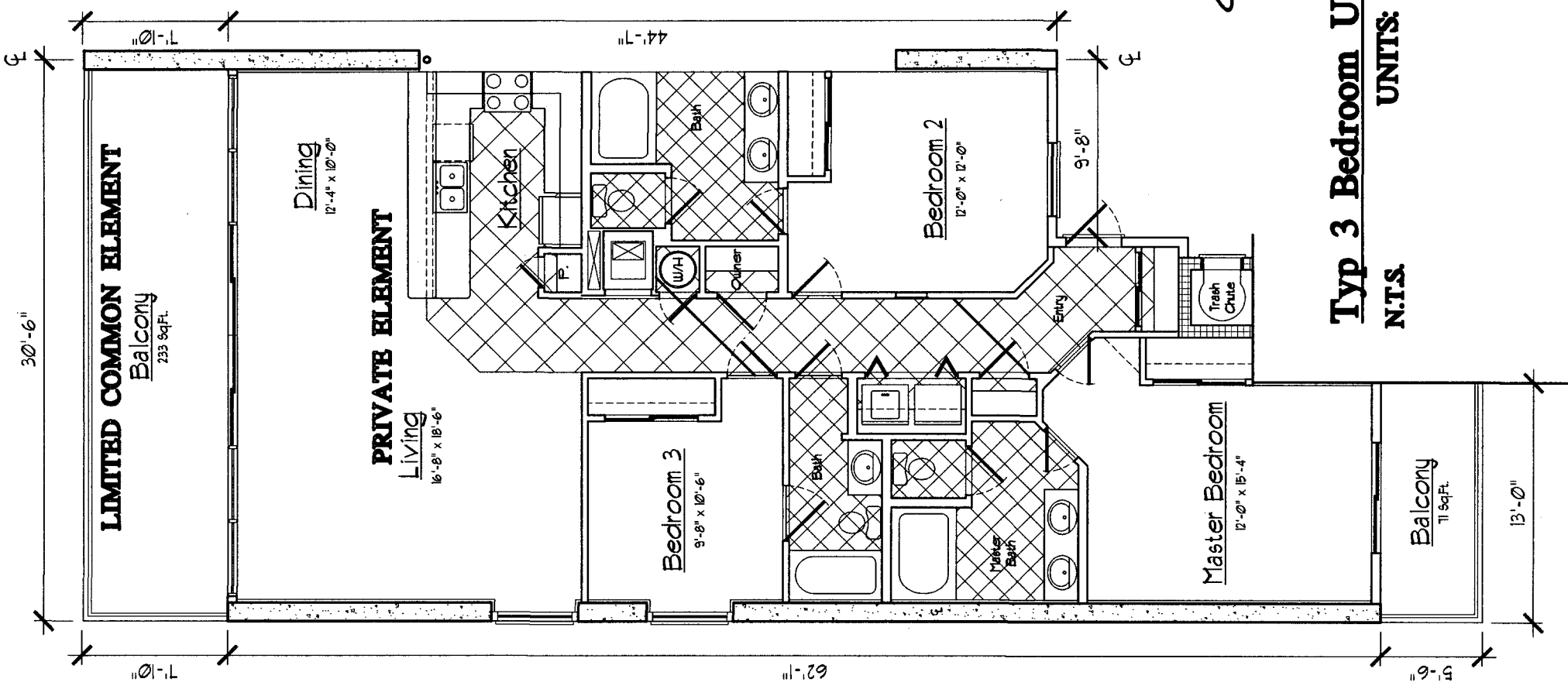


NOTE:
 ALL RESIDENTIAL UNIT BALCONIES ARE TO BE LIMITED COMMON ELEMENT
 ALL RESIDENTIAL UNITS ARE TO BE PRIVATE ELEMENT
 ALL WALKWAYS ARE TO BE COMMON ELEMENT
 ALL OTHER AREAS TO BE COMMON ELEMENT UNLESS OTHERWISE NOTED



Typ 2 Bedroom Unit 1,236sf (Unit A)

- N.T.S.**
- UNITS:** 302 404 506 703 805 1002 1104 1206 1503 1605 1802
 303 405 602 704 806 1003 1105 1402 1504 1606 1803
 304 406 603 705 902 1004 1106 1403 1505 1702 1804
 305 502 604 706 903 1005 1202 1404 1506 1703 1805
 306 503 605 802 904 1006 1203 1405 1602 1704
 402 504 606 803 905 1102 1204 1406 1603 1705
 403 505 702 804 906 1103 1205 1502 1604 1706



Typ 3 Bedroom Unit 1,536sf (Unit B)

- N.T.S.**
- UNITS:** 201 407 701 907 1201 1507 1806
 204 501 707 1001 1207 1601
 301 507 801 1107 1401 1607
 307 601 807 1101 1407 1701
 401 607 901 1107 1501 1707

THE UNDERSIGNED, HENRY NORRIS, A REGISTERED ARCHITECT IN THE STATE OF ALABAMA, REGISTRATION NUMBER 2885, PURSUANT TO SECTION 58A-2-209, CODE OF ALABAMA, HAS REVIEWED THE ARCHITECTURAL DRAWINGS AND SPECIFICATIONS OF THIS CONDOMINIUM PROJECT AND HAS FOUND THEM TO BE IN ACCORDANCE WITH THE REQUIREMENTS OF SAID CODE. THIS REVIEW IS LIMITED TO THE ARCHITECTURAL ASPECTS OF THE PROJECT AND DOES NOT CONSTITUTE A GUARANTEE OF THE ACCURACY OF THE INFORMATION CONTAINED HEREIN. THE ARCHITECT ASSUMES NO LIABILITY FOR ANY ERRORS OR OMISSIONS IN THE DRAWINGS OR SPECIFICATIONS, OR FOR ANY CONSEQUENCES ARISING FROM THE USE OF THE SAME. THE ARCHITECT'S RESPONSIBILITY IS LIMITED TO THE ARCHITECTURAL ASPECTS OF THE PROJECT AND DOES NOT EXTEND TO THE STRUCTURAL, MECHANICAL, ELECTRICAL, OR PLUMBING ASPECTS OF THE PROJECT. THE ARCHITECT'S REVIEW IS LIMITED TO THE ARCHITECTURAL ASPECTS OF THE PROJECT AND DOES NOT EXTEND TO THE STRUCTURAL, MECHANICAL, ELECTRICAL, OR PLUMBING ASPECTS OF THE PROJECT.

Signature: H. Norris DATE: 12/20/04
 ALABAMA REGISTRATION NUMBER 2885

Part Book 25 page 55