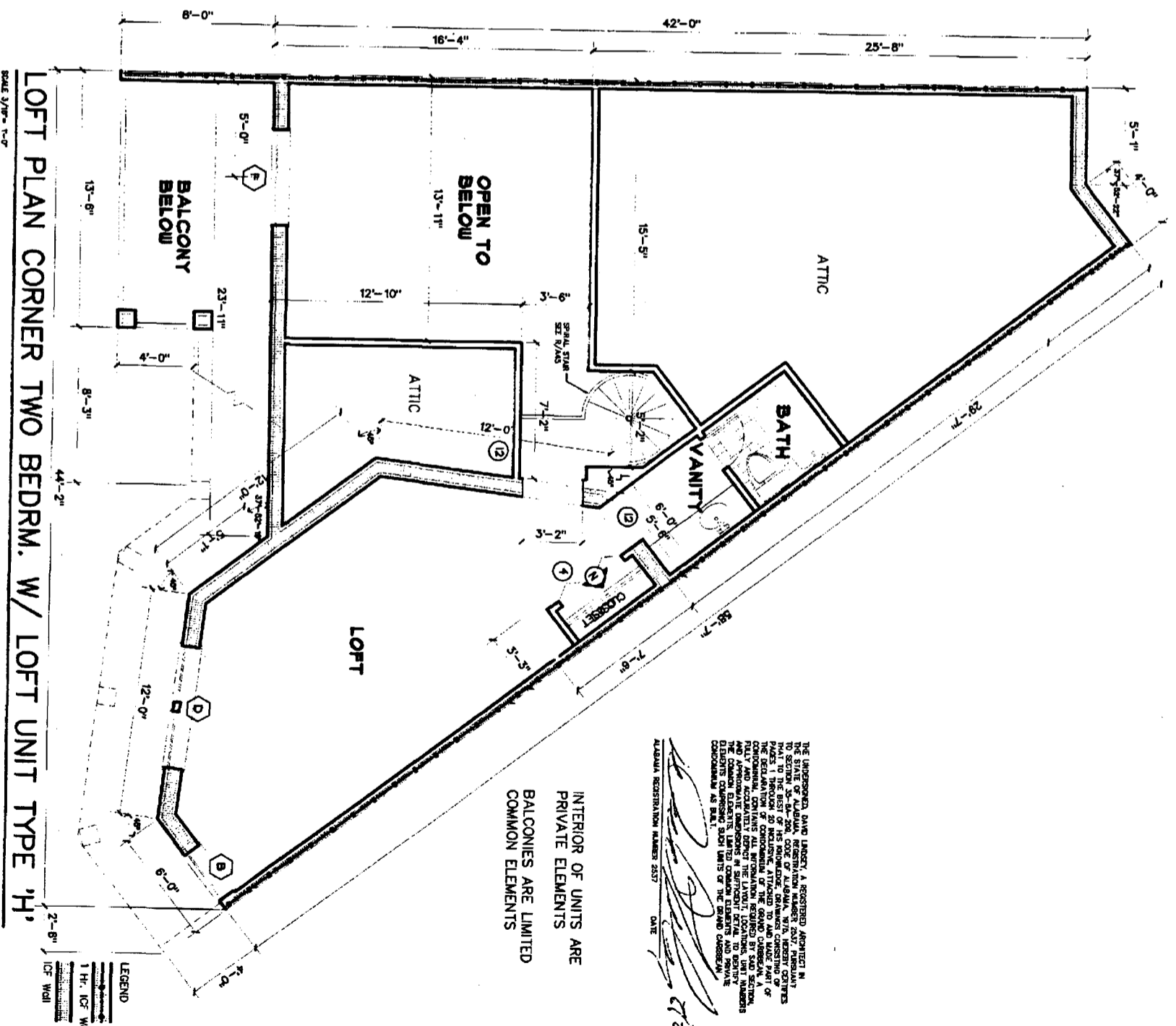


App. Bk. 22 pg 176



LOFT PLAN CORNER TWO BEDRM. W/ LOFT UNIT TYPE 'H'

SCALE 3/16" = 1'-0"

THE UNDERSIGNED, DAVID LINDSEY, A REGISTERED ARCHITECT IN THE STATE OF ALABAMA, REGISTRATION NUMBER 2557, HEREBY CERTIFY THAT TO THE BEST OF HIS KNOWLEDGE AND BELIEF, THE FOREGOING PLANS, SPECIFICATIONS AND SCHEDULES ATTACHED TO AND MADE PART OF THIS CONTRACT, CONTAINING ALL WORK OF THE GRAND CARIBBEAN, A MULTI-FAMILY DEVELOPMENT, ORANGE BEACH, ALABAMA, FULLY AND ACCURATELY REPRESENT THE LAYOUT, LOCATIONS, UNIT NUMBERS AND COMMON ELEMENTS OF THE LOFT UNIT TYPE 'H' SHOWN THEREON. THE COMMON ELEMENTS OF THE LOFT UNIT TYPE 'H' SHOWN THEREON ARE SHOWN AS BALCONY ARE LIMITED TO THE COMMON ELEMENTS OF THE GRAND CARIBBEAN DEVELOPMENT AS SHOWN.

DAVID LINDSEY  
 ALABAMA REGISTRATION NUMBER 2557 ONE

INTERIOR OF UNITS ARE PRIVATE ELEMENTS  
 BALCONIES ARE LIMITED COMMON ELEMENTS

LEGEND  
 1" H. ICF WALL  
 ICF WALL

SHEET NO. 20 OF

A Multi-Family Development  
**The Grand Caribbean**  
 Condominium  
 Orange Beach, Alabama

LOFT ROOM

**DAVID LINDSEY, ARCHITECT**  
 DESIGN, PLANNING, INTERIORS

(251) 454-7213  
 104 RIVEROAKS DRIVE FAIRHOPE ALABAMA 36532

