

Appt. Bk. 22 PG 168

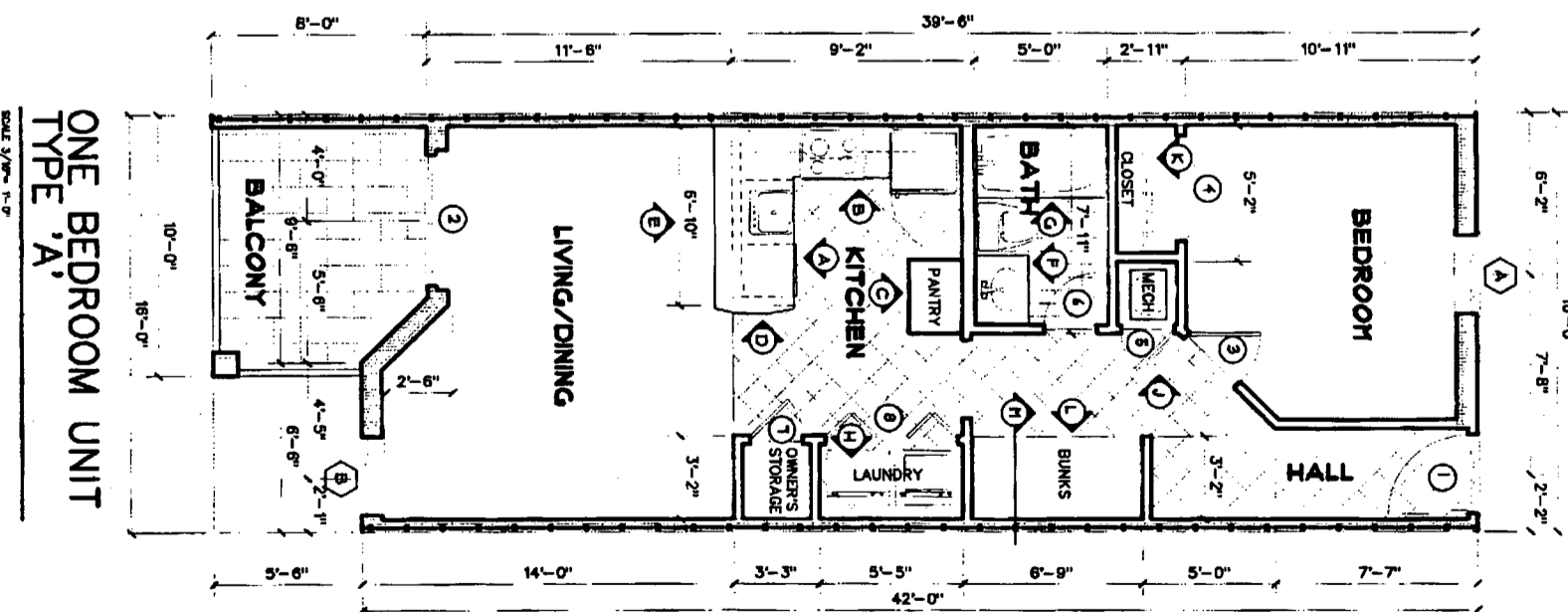
INTERIOR OF UNITS ARE PRIVATE ELEMENTS
BALCONIES ARE LIMITED COMMON ELEMENTS

THE UNDERSIGNED, DAVID LINDSEY, A REGISTERED ARCHITECT IN THE STATE OF ALABAMA, REGISTRATION NUMBER 2537, PURSUANT TO SECTION 36-6A-259, ONE OF ALABAMA, 1978, HONORARY CERTIFICATES OF ACADEMIC DISTINCTION, HEREBY CERTIFY THAT THIS SET OF PLANS, ATTACHED TO AND MADE PART OF THE DECLARATION OF CONDOMINIUM OF THE GRAND CARIBBEAN, A CONDOMINIUM, COMING INTO BEING BY THE LITTON HARBOR TRUST, A TRUST, AND APPROPRIATE ORDINANCES IN SUBSTANTIAL DETAIL TO NOTIFY THE COMMON ELEMENTS LIMITED COMMON ELEMENTS AND PRIVATE COMMON ELEMENTS OWNERS OF THE GRAND CARIBBEAN CONDOMINIUM AS BUILT, 1981 BY THE GRAND CARIBBEAN CONDOMINIUM AS BUILT.

ALABAMA REGISTRATION NUMBER 2537
DATE 7/12/83

Area: 651 sq ft

UNITS	101	119	201	219	301	319
	102	120	202	220	302	320
	103	121	203	221	303	321
	104	122	204	222	304	322
	105	123	205	223	305	323
	106	124	206	224	306	324
	125	225	325			



LEGEND
1 Hr. ICF Wall
ICF Wall

SHEET NO. 12 OF 17

A Multi-Family Development
The Grand Caribbean
Condominium
Orange Beach, Alabama

DATE: 7/12/83

DAVID LINDSEY, ARCHITECT
DESIGN, PLANNING, INTERIORS
(251) 454-7213
104 RIVEROAKS DRIVE FAIRHOPE ALABAMA 36632

