

Apr. 2k. 22 P8.173

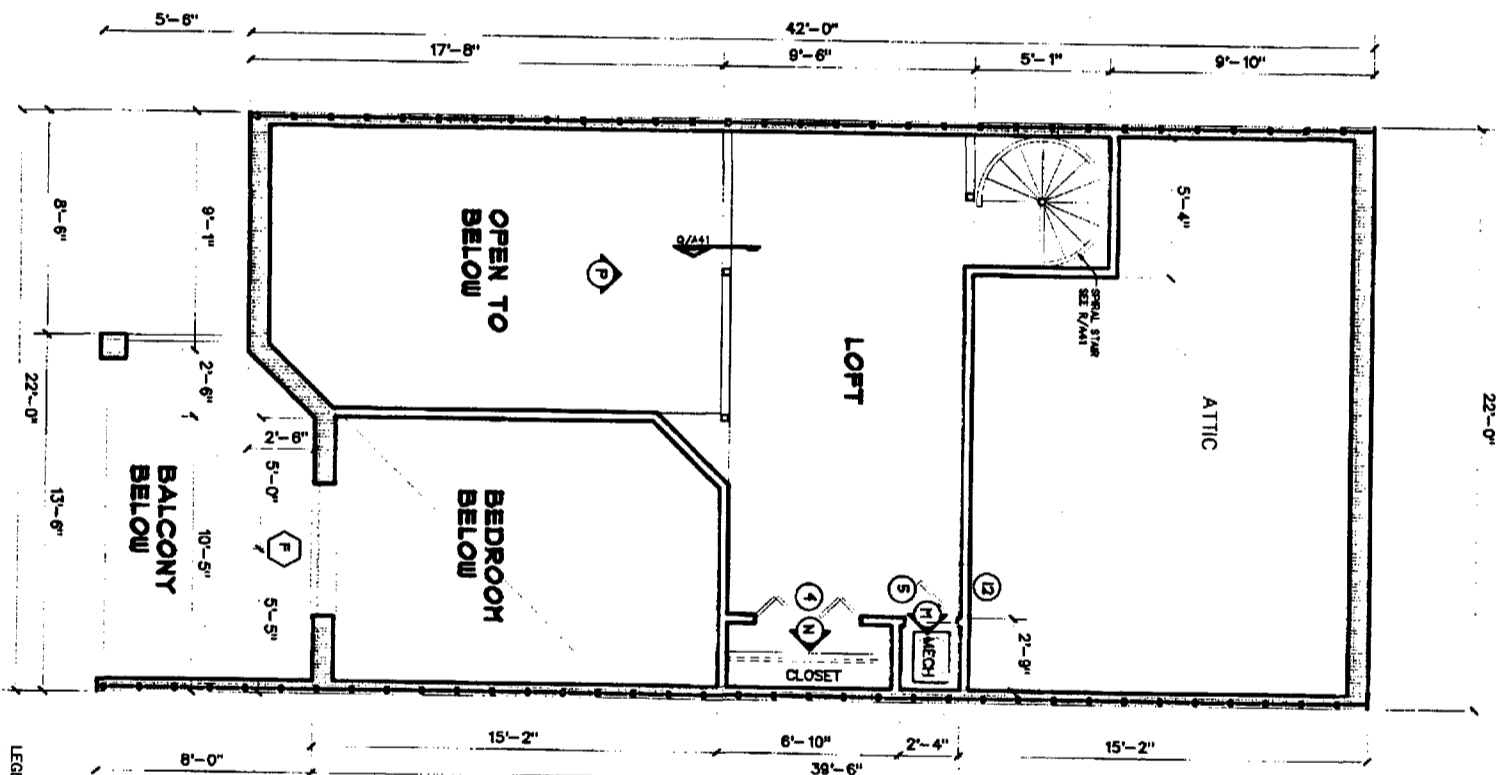
INTERIOR OF UNITS ARE  
PRIVATE ELEMENTS  
BALCONIES ARE LIMITED  
COMMON ELEMENTS

THE UNDERSIGNED, DAVID LINDSEY, A REGISTERED ARCHITECT IN THE STATE OF ALABAMA, RESPECTFULLY CERTIFIES THAT THE INFORMATION CONTAINED HEREIN IS TRUE AND CORRECT TO THE BEST OF HIS KNOWLEDGE, BELIEFS AND OPINIONS, AND THAT HE HAS NOT BEEN ADVISED OF ANY FACTS OR CIRCUMSTANCES WHICH WOULD CAUSE HIM TO BELIEVE THAT THE INFORMATION CONTAINED HEREIN IS UNTRUE OR MISLEADING. THE UNDERSIGNED HAS NOT BEEN ADVISED OF ANY FACTS OR CIRCUMSTANCES WHICH WOULD CAUSE HIM TO BELIEVE THAT THE INFORMATION CONTAINED HEREIN IS UNTRUE OR MISLEADING. THE UNDERSIGNED HAS NOT BEEN ADVISED OF ANY FACTS OR CIRCUMSTANCES WHICH WOULD CAUSE HIM TO BELIEVE THAT THE INFORMATION CONTAINED HEREIN IS UNTRUE OR MISLEADING.

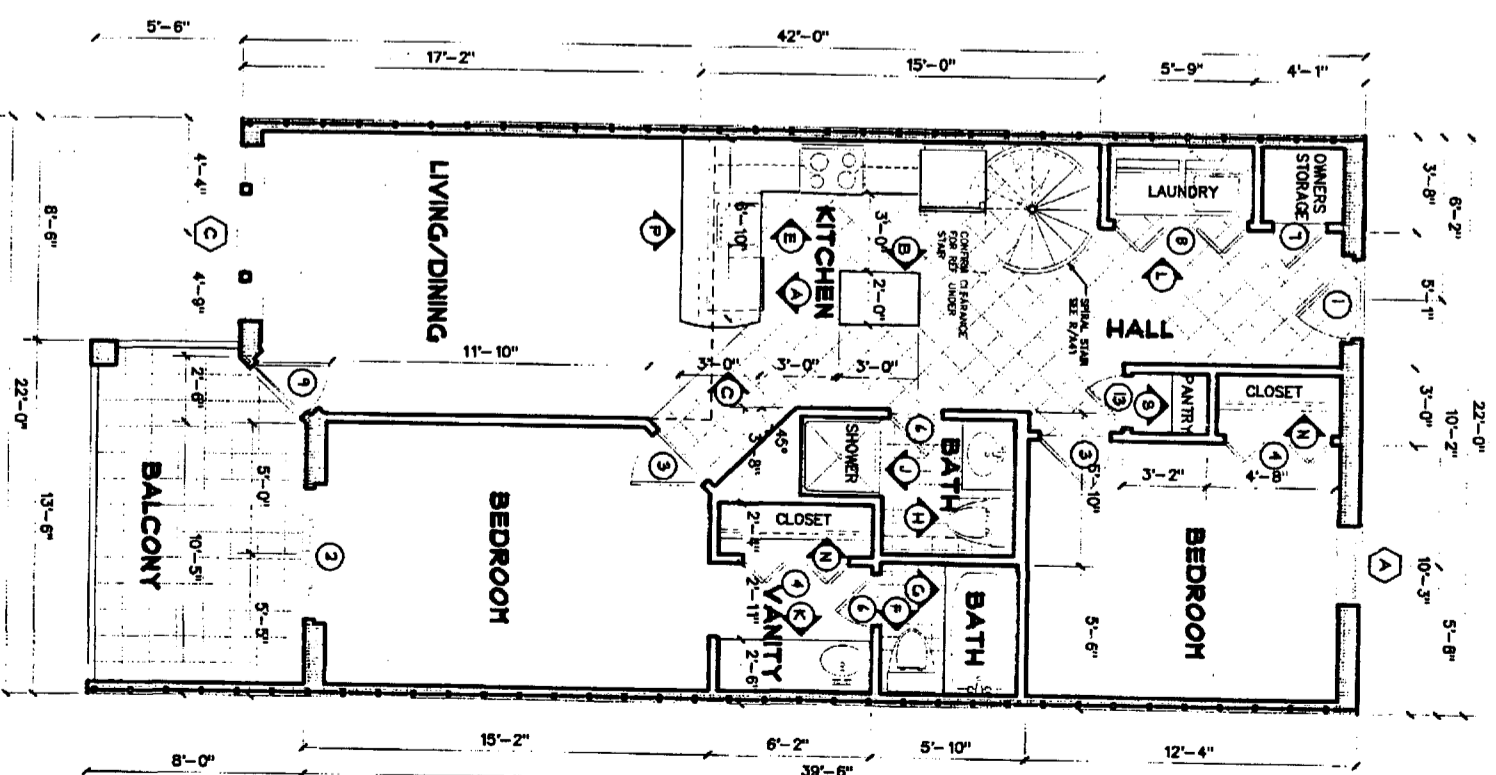
ALABAMA REGISTRATION NUMBER 8337 DATE 4/2/03

LOWER LEVEL  
TOTAL  
Area: 281 sq ft  
Area: 1028 sq ft  
415  
415

UNITS:  
407  
408  
409  
410  
411  
412  
413  
414  
415



LOFT PLAN  
SCALE 3/8" = 1'-0"



TWO BEDROOM W/ LOFT  
UNIT TYPE 'F'  
SCALE 3/8" = 1'-0"

A Multi-Family Development  
**The Grand Caribbean**  
Condominium  
Orange Beach, Alabama

DAVID LINDSEY, ARCHITECT  
DESIGN, PLANNING, INTERIORS  
(251) 454-7213  
104 RIVEROAKS DRIVE FAIRHOPE ALABAMA 36532

SHIRT NO. 17 OF

98-1041