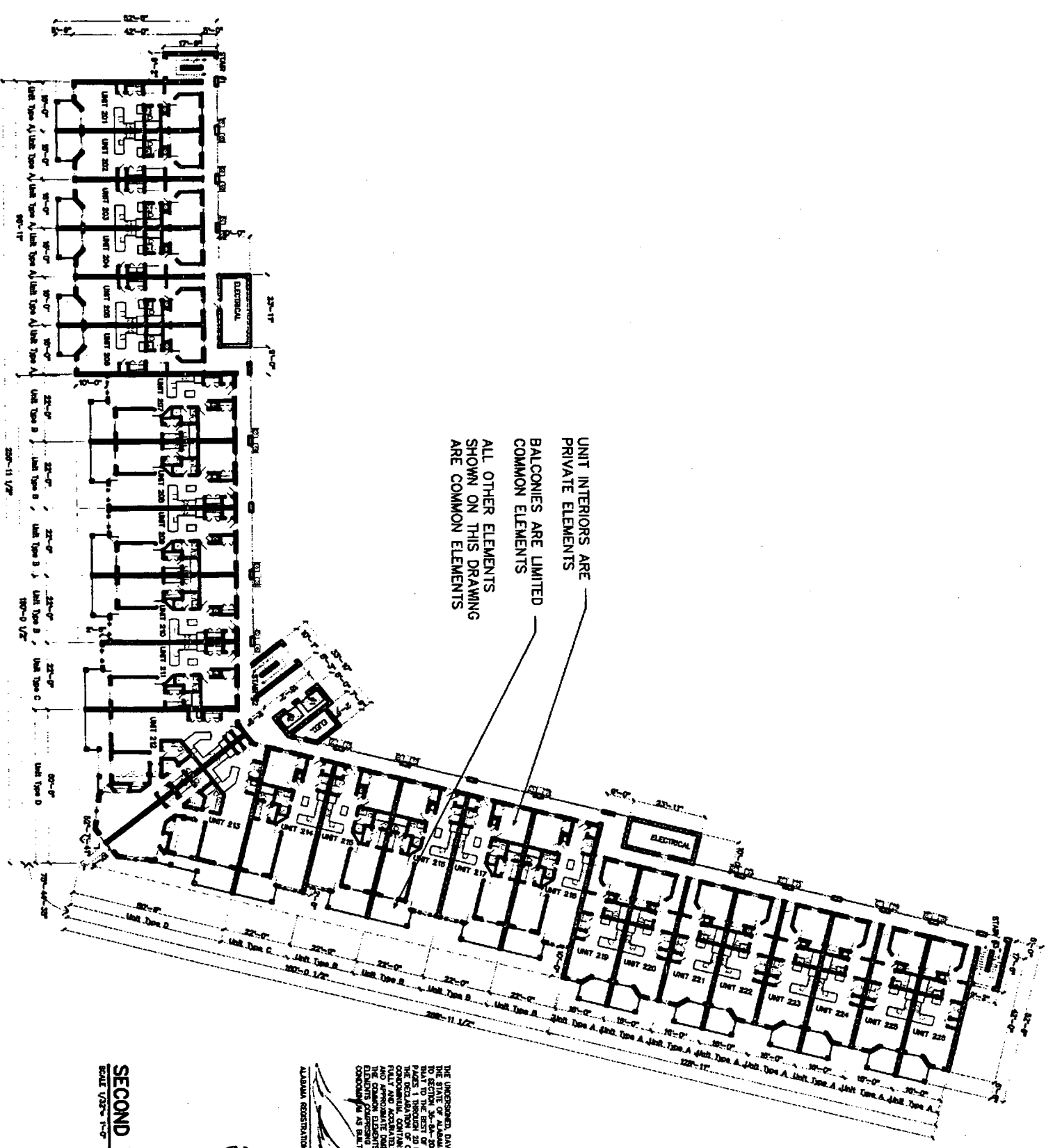


Appt 31c 2a pg 160



UNIT INTERIORS ARE PRIVATE ELEMENTS
BALCONIES ARE LIMITED COMMON ELEMENTS
ALL OTHER ELEMENTS SHOWN ON THIS DRAWING ARE COMMON ELEMENTS

SECOND FLOOR PLAN
SCALE 1/8" = 1'-0"

THE UNDERSIGNED, DAVID LINDSEY, A REGISTERED ARCHITECT IN THE STATE OF ALABAMA, REGISTRATION NUMBER 2527, HEREBY CERTIFIES THAT THE ABOVE DRAWING IS HIS ORIGINAL WORK AND IS NOT A COPY OF ANY OTHER DRAWING. THE DRAWING IS ATTACHED TO AND MADE PART OF THE RECORD DRAWINGS OF THE PROJECT. THE DRAWING IS NOT TO BE REPRODUCED OR COPIED IN ANY MANNER WITHOUT THE WRITTEN CONSENT OF THE ARCHITECT. THE ARCHITECT'S LIABILITY IS LIMITED TO THE DESIGN AND CONSTRUCTION OF THE PROJECT. THE ARCHITECT IS NOT RESPONSIBLE FOR ANY OTHER ASPECTS OF THE PROJECT. THE ARCHITECT'S SERVICES ARE LIMITED TO THE DESIGN AND CONSTRUCTION OF THE PROJECT. THE ARCHITECT IS NOT RESPONSIBLE FOR ANY OTHER ASPECTS OF THE PROJECT.

ALABAMA REGISTRATION NUMBER 2527
DATE 7/2/83

SHEET NO.
4
OF

A Multi-Family Development
The Grand Caribbean
Condominium
Orange Beach, Alabama

DATE:
7/2/83

DAVID LINDSEY, ARCHITECT
DESIGN, PLANNING, INTERIORS
(251) 454-7213
104 RIVEROAKS DRIVE FAIRHOPE ALABAMA 36532

