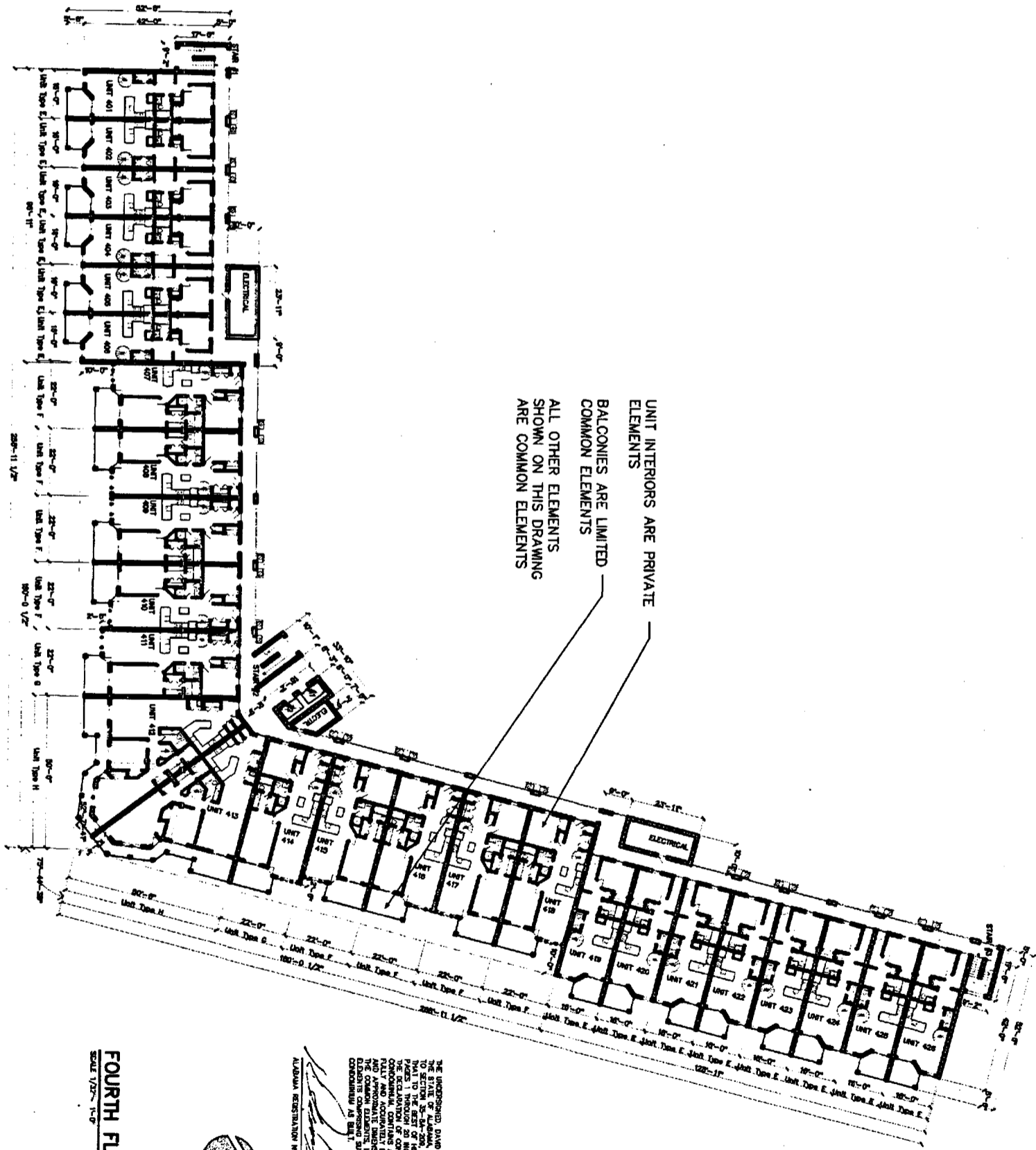


Apt. Bk. 22 PG. 12A



UNIT INTERIORS ARE PRIVATE
ELEMENTS
BALCONIES ARE LIMITED
COMMON ELEMENTS
ALL OTHER ELEMENTS
SHOWN ON THIS DRAWING
ARE COMMON ELEMENTS

FOURTH FLOOR PLAN
SCALE 1/32" = 1'-0"

THE UNDERSIGNED, DAVID LINDSEY, A REGISTERED ARCHITECT IN THE STATE OF ALABAMA, RECEIVING FEE NUMBER 2347, HEREBY CERTIFY THAT TO THE BEST OF HIS KNOWLEDGE AND BELIEF, THE PLANS, SPECIFICATIONS, NOTES AND CONDITIONS OF CONTRACT, ATTACHED TO AND MADE PART OF THIS DRAWING, COMPLY WITH ALL CITY, COUNTY AND STATE REQUIREMENTS, AND THAT HE HAS NOT BEEN ADVISED OF ANY VIOLATION OF ANY CITY, COUNTY AND STATE REQUIREMENTS. THE UNDERSIGNED IS NOT PROVIDING ANY WARRANTIES OR REPRESENTATIONS IN CONNECTION WITH THESE PLANS, SPECIFICATIONS, NOTES AND CONDITIONS OF CONTRACT, EXCEPT AS SET FORTH IN THE PROFESSIONAL AGREEMENT BETWEEN HIMSELF AND THE CLIENT. THE UNDERSIGNED IS NOT PROVIDING ANY WARRANTIES OR REPRESENTATIONS IN CONNECTION WITH THESE PLANS, SPECIFICATIONS, NOTES AND CONDITIONS OF CONTRACT, EXCEPT AS SET FORTH IN THE PROFESSIONAL AGREEMENT BETWEEN HIMSELF AND THE CLIENT.

ALABAMA REGISTRATION NUMBER 2347 DATE 7/24/03



SHEET NO. 6 OF 10

A Multi-Family Development
The Grand Caribbean
Condominium
Orange Beach, Alabama

DAVID LINDSEY, ARCHITECT
DESIGN, PLANNING, INTERIORS
(251) 454-7213
104 RIVEROAKS DRIVE FAIRHOPE ALABAMA 36532

