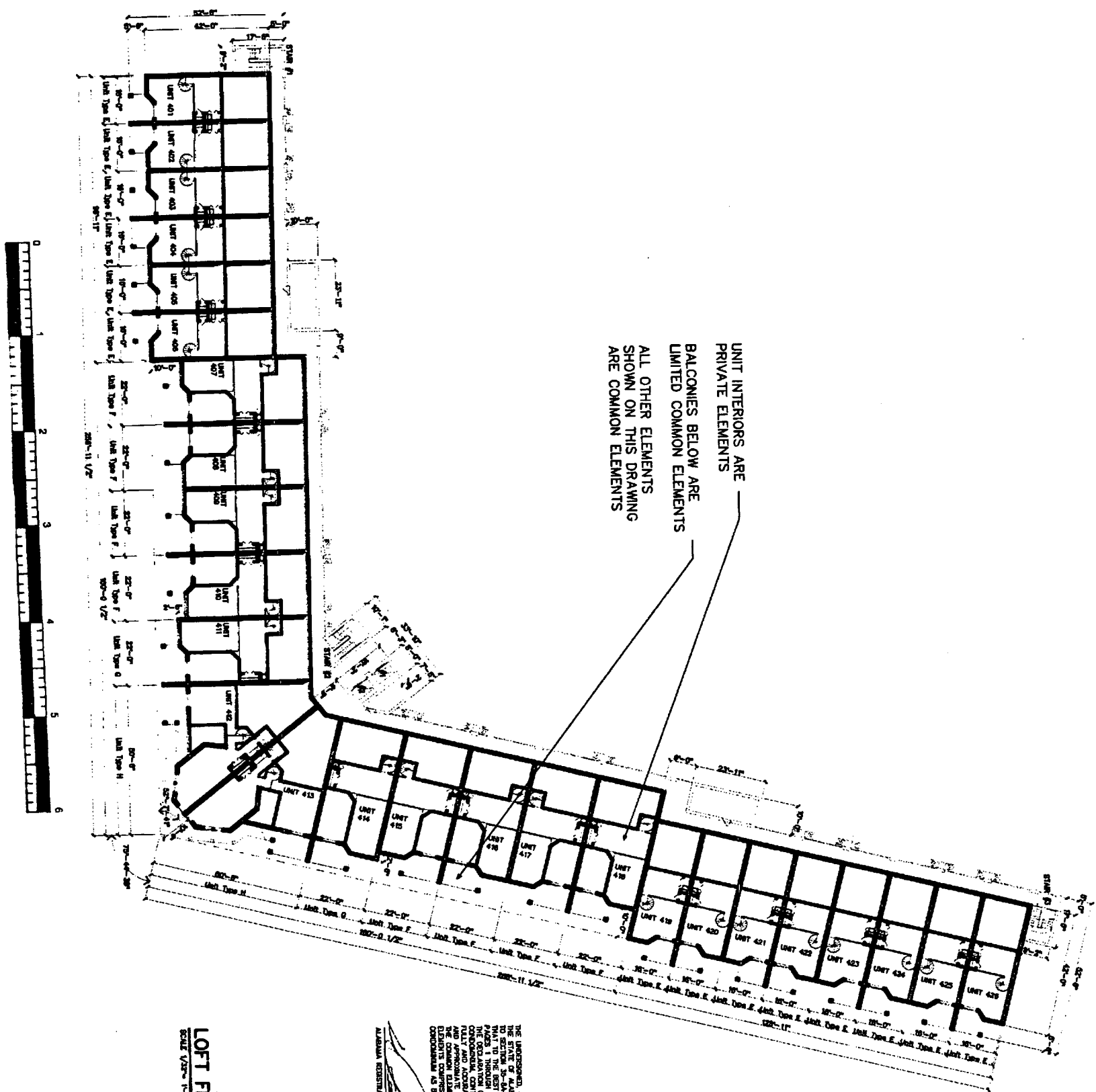


App. Bk. aa pg. 103



UNIT INTERIORS ARE PRIVATE ELEMENTS
BALCONIES BELOW ARE LIMITED COMMON ELEMENTS
ALL OTHER ELEMENTS SHOWN ON THIS DRAWING ARE COMMON ELEMENTS

LOFT FLOOR PLAN
SCALE 1/8" = 1'-0"

THE UNDERSIGNED, DAVID LINDSEY, A REGISTERED ARCHITECT IN THE STATE OF ALABAMA, HEREBY CERTIFY THAT I AM THE ARCHITECT OF RECORD FOR THE PROJECT DESCRIBED HEREIN AND THAT I AM A MEMBER IN GOOD STANDING OF THE ALABAMA ARCHITECTURAL SOCIETY. I HEREBY CERTIFY THAT I AM NOT PROVIDING ARCHITECTURAL SERVICES TO ANY OTHER PARTY FOR THE SAME PROJECT AND THAT I AM NOT PROVIDING ARCHITECTURAL SERVICES TO ANY OTHER PARTY FOR THE SAME PROJECT AND THAT I AM NOT PROVIDING ARCHITECTURAL SERVICES TO ANY OTHER PARTY FOR THE SAME PROJECT.

DAVID LINDSEY
ALABAMA REGISTRATION NUMBER 2837
DATE 7/16/13

SHEET NO.
7
OF

A Multi-Family Development
The Grand Caribbean
Condominium
Orange Beach, Alabama

DAVID LINDSEY, ARCHITECT
DESIGN, PLANNING, INTERIORS
(251) 454-7213
104 RIVEROAKS DRIVE FAIRHOPE ALABAMA 36532

