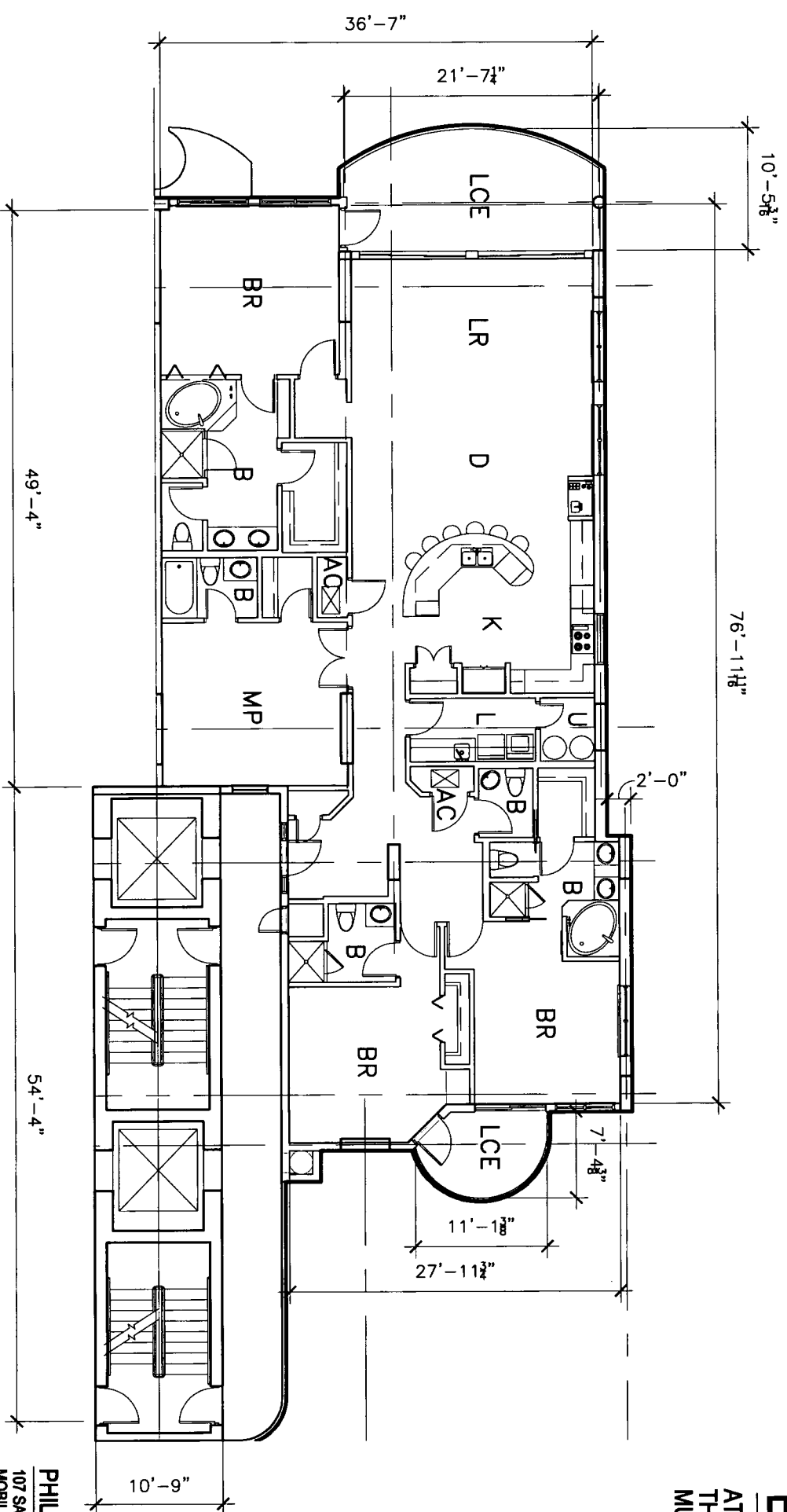


# EXHIBIT "A"

ATTACHED TO AND MADE A PART OF THE DECLARATION OF CONDOMINIUM OF MUSTIQUE, A CONDOMINIUM.

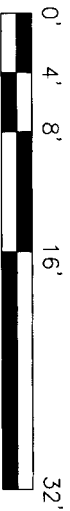


## MUSTIQUE A CONDOMINIUM GULF SHORES, ALABAMA

PHILLIP N. OWENS & ASSOC., L.L.C.  
107 SAINT FRANCIS ST., SUITE 1702 PH (251) 652-2823  
MOBILE, ALABAMA 36602 FAX (251) 652-2824



UNIT 1101 PLAN 2,511 SQ. FT.



### NOTES:

THIS IS TO CERTIFY THAT ALL OF THE CONDOMINIUM PROPERTY AND ALL STRUCTURES OF THE CONDOMINIUM ARE LOCATED WITHIN FLOOD ZONES "VE"(13), "VE"(12), "AE"(10), AND "AE"(11), AS DETERMINED BY THE U.S. DEPARTMENT OF HOUSING AND URBAN DEVELOPMENT. ALL OF THE REAL PROPERTY DESCRIBED IN THE PLANS IS SUBJECT TO SPECIAL DECLARANT RIGHTS AS SET OUT IN THE DECLARATION OF CONDOMINIUM OF MUSTIQUE, A CONDOMINIUM.

ALL OF THE REAL PROPERTY DESCRIBED ON THESE PLANS ARE SUBJECT TO DEVELOPMENT RIGHTS AND SPECIAL DECLARANT RIGHTS AS SET OUT IN THE DECLARATION OF CONDOMINIUM OF MUSTIQUE, A CONDOMINIUM.

NOT TO SCALE

CDD-40

APP. BK. 25 PG. 154