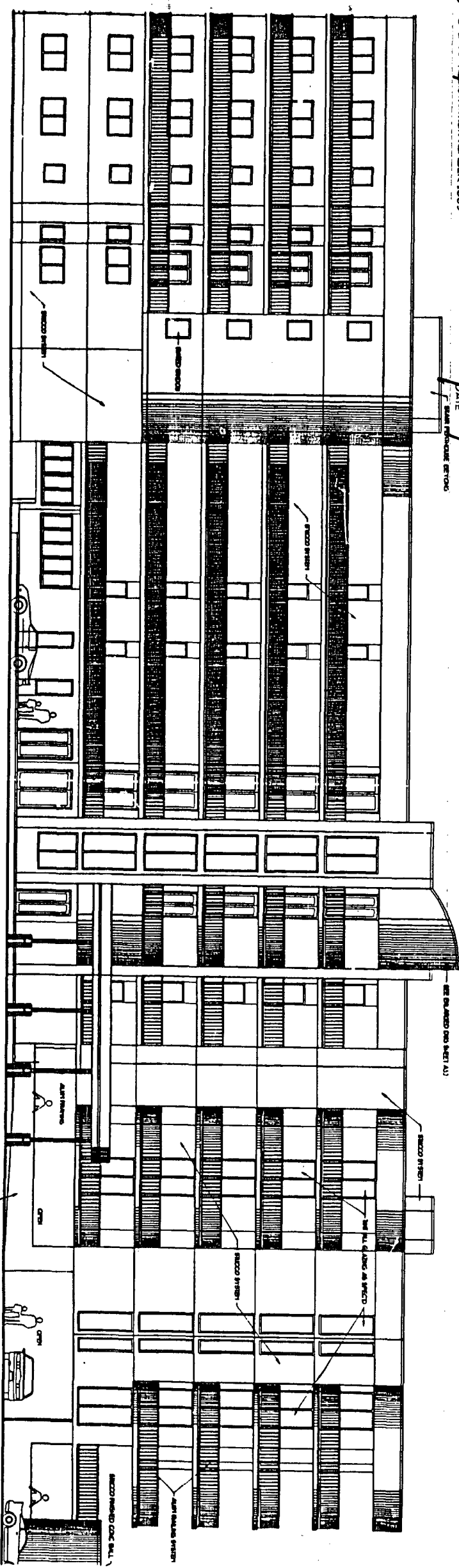


THE UNDERSIGNED, HENRY H. MORRIS, A REGISTERED ARCHITECT IN THE STATE OF ALABAMA, REGISTRATION NUMBER 2665, PURSUANT TO SECTION 35-8A-209, CODE OF ALABAMA, 1975, HEREBY CERTIFIES THAT TO THE BEST OF HIS KNOWLEDGE DRAWINGS, CONSISTING OF PAGES THROUGH IS INCLUSIVE, ATTACHED TO AND MADE PART OF THE DECLARATION OF CONDOMINIUM OF THE PASS, A CONDOMINIUM CONTAINS ALL INFORMATION REQUIRED BY SAID SECTION 35-8A-209 AND ACCURATELY DEPICTS THE LAYOUT, LOCATIONS, UNIT NUMBERS, AND APPLICABLE DIMENSIONS IN STRICT DETAIL TO IDENTIFY THE COMMON ELEMENTS, LIMITED COMMON ELEMENTS AND PRIVATE ELEMENTS COMPRISING SAID UNITS OF THE PASS, A CONDOMINIUM AS SHOWN.

ALABAMA REGISTRATION NUMBER 2665

8/22/02
DATE

EAST ELEVATION
1/4" = 1'-0"



WEST ELEVATION
1/4" = 1'-0"

Instrument 578028 P-92 10 of 20
Apt Bk 22 B 83



HENRY MORRIS & ASSOC., INC.
ARCHITECTURAL/ENVIRONMENTAL DESIGN

30 N. PALMFOX
PENSACOLA,
FLORIDA 3254
(850) 432-6011
FAX 432-5001
www.henry.com

THE PASS
A CONDOMINIUM RESORT

DESIGNER: HENRY MORRIS & ASSOC., INC.
DATE: 08/22/02
ORDER: 1441
JOB NO.: 070371

| | |
|-------|---|
| SHEET | 9 |
| OF 10 | |