

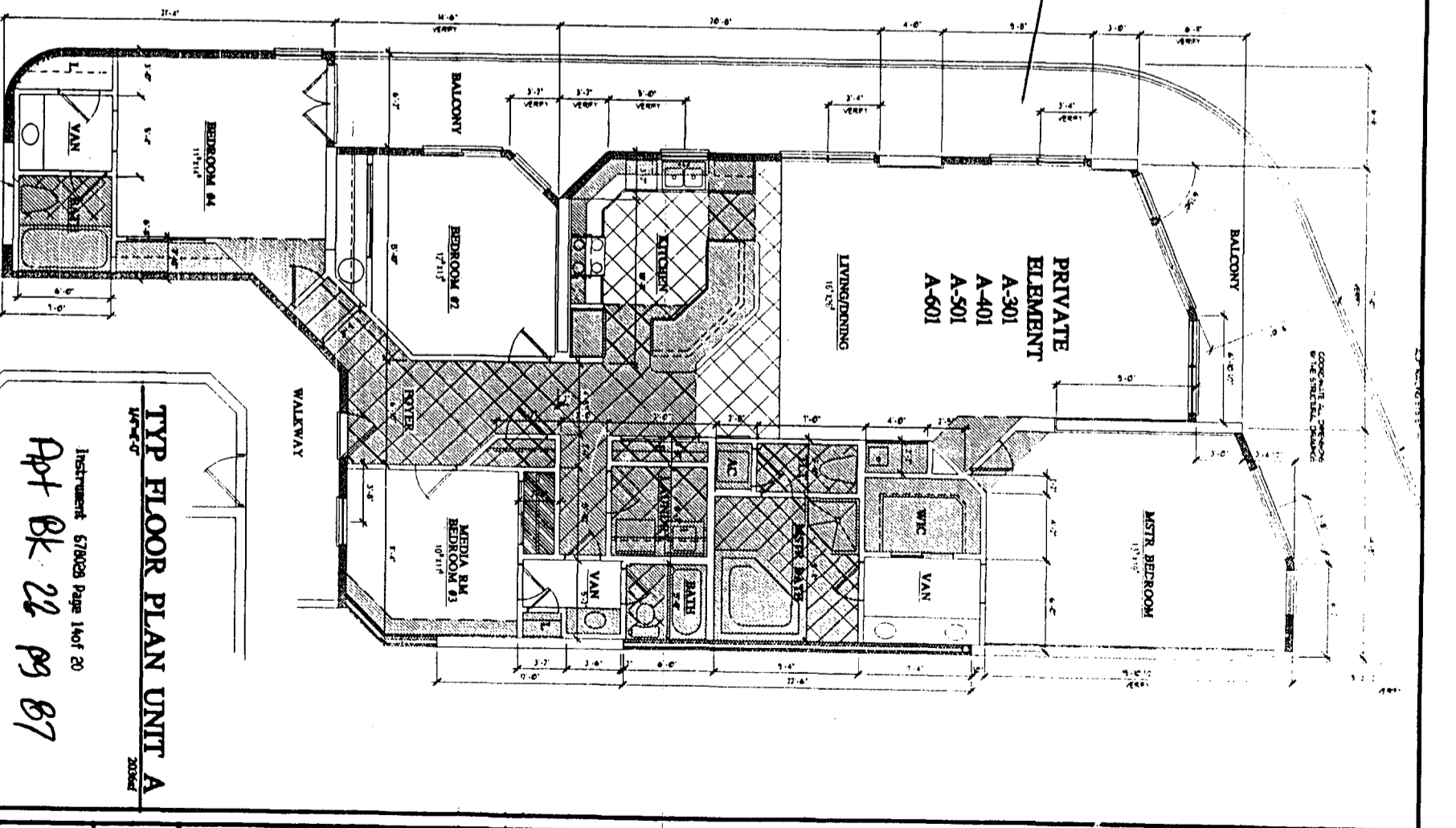
FLOOR PLAN UNIT B
1772'

NOTE:
ALL RESIDENTIAL UNIT BALCONIES TO BE LIMITED COMMON ELEMENT.
ALL RESIDENTIAL UNITS TO BE PRIVATE ELEMENT.
ALL OTHER AREAS TO BE COMMON ELEMENTS UNLESS OTHERWISE NOTED.

LIMITED COMMON ELEMENTS

LIMITED COMMON ELEMENTS

THE UNDERSIGNED HENRY H. MORRIS, A REGISTERED ARCHITECT IN THE STATE OF ALABAMA, REGISTRATION NUMBER 2665, PURSUANT TO SECTION 35-6A-209, CODE OF ALABAMA 1975, HEREBY CERTIFIES THAT TO THE BEST OF HIS KNOWLEDGE, DRAWINGS CONSISTING OF PAGES 1 THROUGH 19 INCLUSIVE ATTACHED TO AND MADE PART OF THE DECLARATION OF CONDOMINIUM OF THE PAS A CONDOMINIUM CONTAINS ALL INFORMATION REQUIRED BY SAID SECTION FULLY AND ACCURATELY DEPICTS THE LAYOUT, LOCATIONS, UNIT NUMBERS AND APPROXIMATE DIMENSIONS IN SUFFICIENT DETAIL TO IDENTIFY THE COMMON ELEMENTS, LIMITED COMMON ELEMENTS AND PRIVATE ELEMENTS COMPRISING SUCH UNITS OF THE PAS, CONDOMINIUM, AS BUILT.
ALABAMA REGISTRATION NUMBER 2665
H. MORRIS
9/22/02
DATE



TYP FLOOR PLAN UNIT A
2004'

Instrument 579026 Page 14 of 20
Appt Bk 22 pg 87

8 SHEET 8 NOT APPROV' DIM REDUCE SCALE BY HALF.

<p>HENRY MORRIS & ASSOC., INC. ARCHITECTURE & ENVIRONMENTAL DESIGN</p>	<p>30 N PALMFOX PENSACOLA FLORIDA 32501</p>	<p>THE PAS A CONDOMINIUM RESORT</p>	<p>JOB NO.: 07031 CAD: TFC ORDERNO: 0441 DATE: 08/09/02 REVISIONS:</p>
	<p>(850) 432-0411 FAX 432-9811 WWW.HENRY.COM</p>		<p>SHEET 13 OF 19</p>

BUSINESS RECORDS CORPORATION