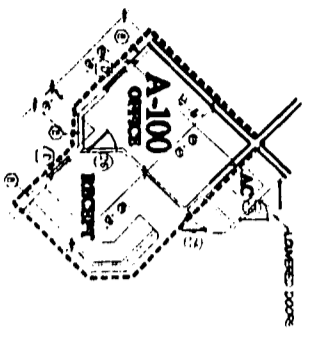
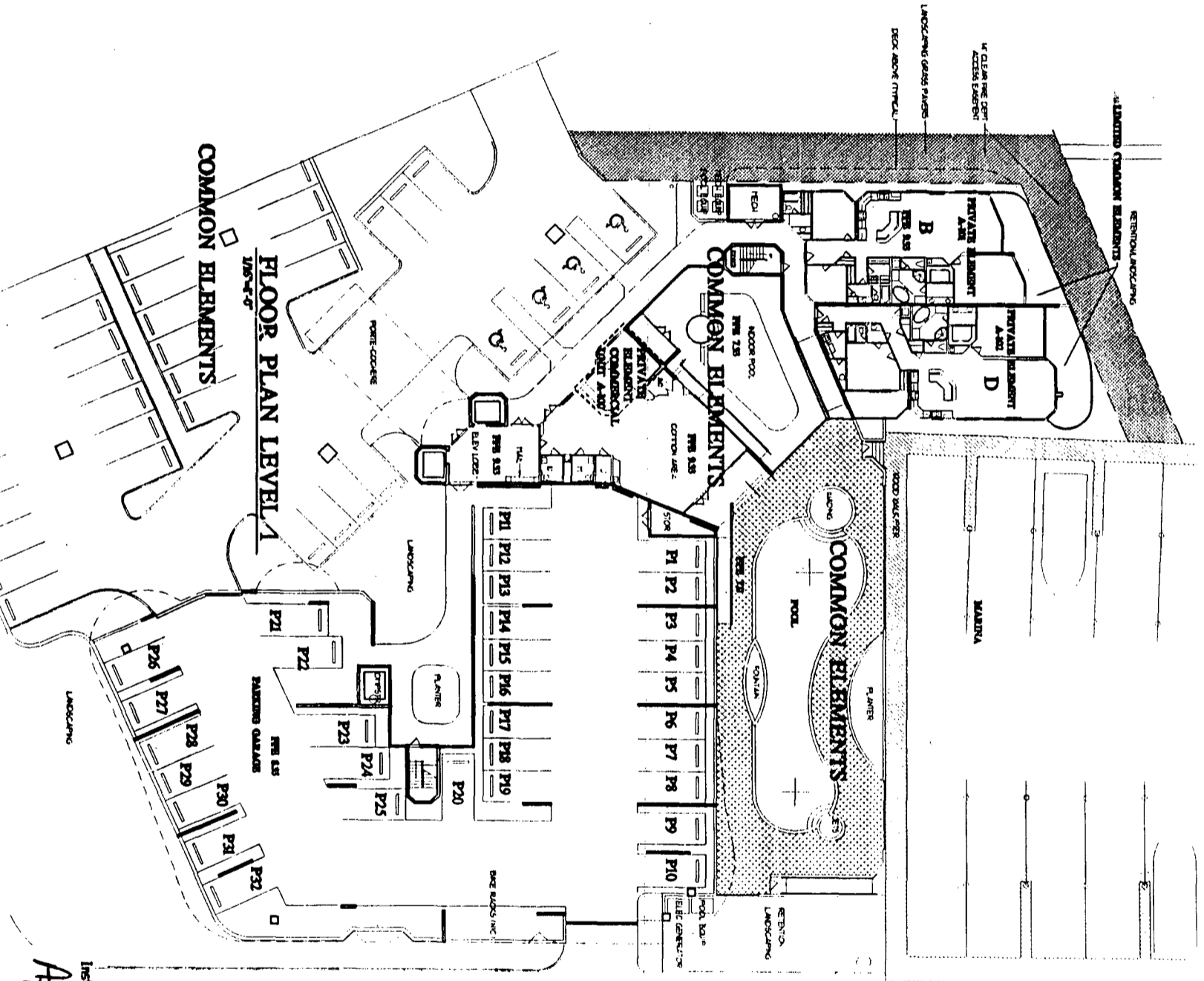


THE UNDERSIGNED HENRY H. MORRIS A REGISTERED ARCHITECT IN THE STATE OF ALABAMA REGISTRATION NUMBER 3665 PURSUANT TO SECTION 39-B-1-109 CODE OF ALABAMA 1975 HEREBY CERTIFIES THAT TO THE BEST OF HIS KNOWLEDGE DRAWINGS CONSISTING OF PAGES 1 THROUGH 18 INCLUSIVE ATTACHED TO AND MADE PART OF THE DECLARATION OF CONDOMINIUM OF THE PASS A CONDOMINIUM CONTAINS ALL INFORMATION REQUIRED BY SAID SECTION FULLY AND ACCURATELY EXCEPT THE LOCATION, LOCATIONS UNIT NUMBERS AND APPLICABLE DIMENSIONS IN SUFFICIENT DETAIL TO IDENTIFY THE COMMON ELEMENTS LIMITED COMMON ELEMENTS AND PRIVATE ELEMENTS COMPRISING SUCH UNITS OF THE PASS CONDOMINIUM. AS BUILT.

HHM
 8/22/02
 DATE



**PRIVATE ELEMENT
 COMMERCIAL UNIT A-100**
 1/8" = 1'-0"
 29 Aug. 02



FLOOR PLAN LEVEL 1
 1/8" = 1'-0"
 COMMON ELEMENTS

**NOTE: ALL NUMBERED
 PARKING SPACES ARE
 LIMITED COMMON
 ELEMENTS**

Instrument 678028 Page 3 of 20
 Apt BK 22 Pg 76

© HENRY MORRIS & ASSOCIATES, INC.



**HENRY
 MORRIS &
 ASSOC., INC.**

ARCHITECT/REAL
 ENVIRONMENTAL
 DESIGN

301 N. PALM AVENUE
 PENSACOLA,
 FLORIDA 32504

(850) 435-6011
 FAX (850) 435-6011
 www.hmorris.com

**THE PASS
 A CONDOMINIUM RESORT**

JOB NO.: 678028
 Dwg. TITLE:
 ORDER/DRAWN:
 DATE: 08/22/02
 REVISIONS:

Floor Plan

SHEET

2

OF 18