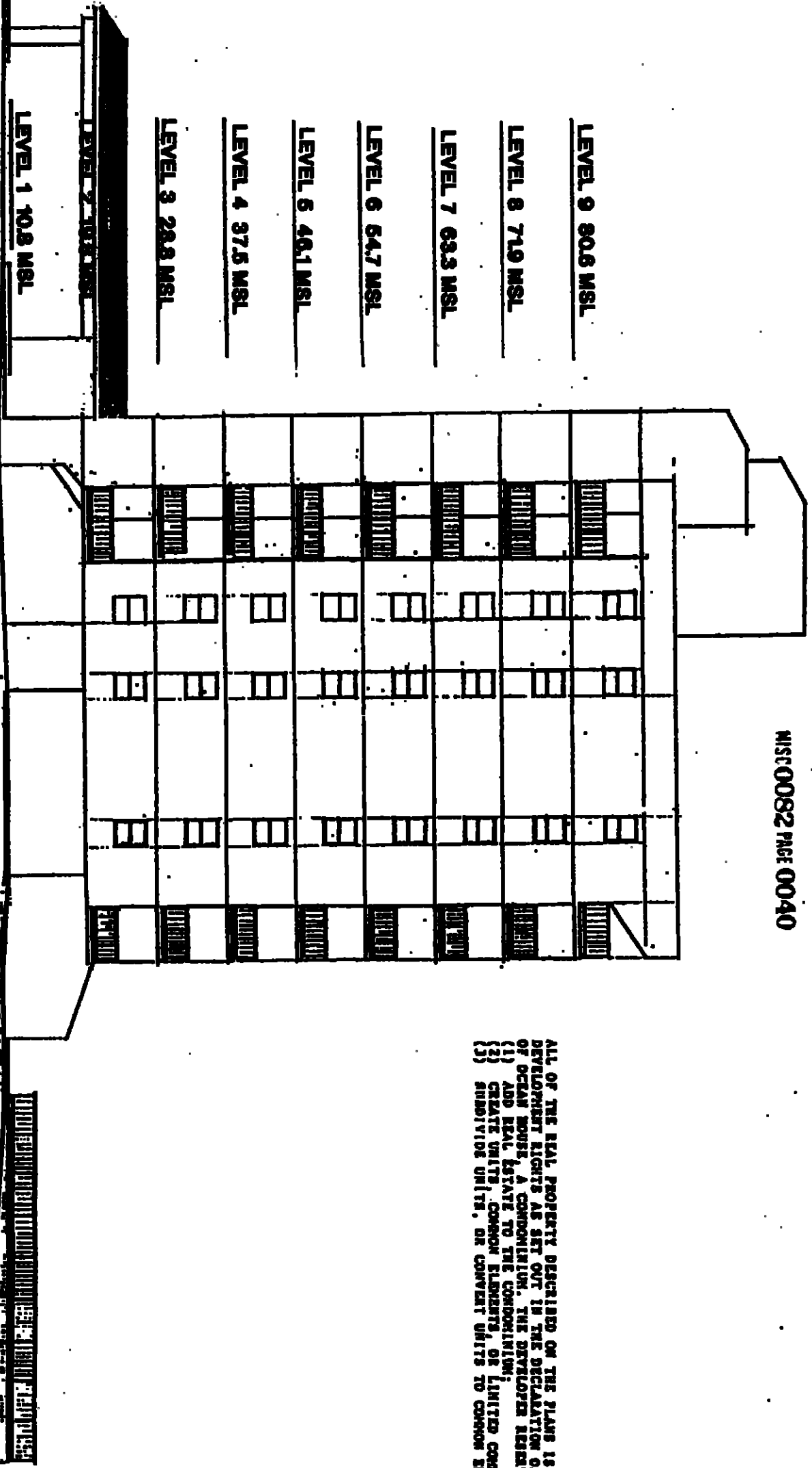


EXHIBIT "C"  
 page 6  
 Attached to Declaration of Condominium  
 OCEAN HOUSE, A CONDOMINIUM

NIST0082 PAGE 0040



WEST ELEVATION (EAST SIMILAR) PHASE I

OCEAN HOUSE, A CONDOMINIUM

ALL OF THE REAL PROPERTY DESCRIBED ON THE PLANS IS SUBJECT TO DEVELOPMENT RIGHTS AS SET OUT IN THE DECLARATION OF CONDOMINIUM OF OCEAN HOUSE, A CONDOMINIUM. THE DEVELOPER RESERVES THE RIGHT TO:  
 (1) ADD REAL ESTATE TO THE CONDOMINIUM;  
 (2) CREATE UNITS, COMMON ELEMENTS, OR LIMITED COMMON ELEMENTS;  
 (3) SUBDIVIDE UNITS, OR CONVERT UNITS TO COMMON ELEMENTS.