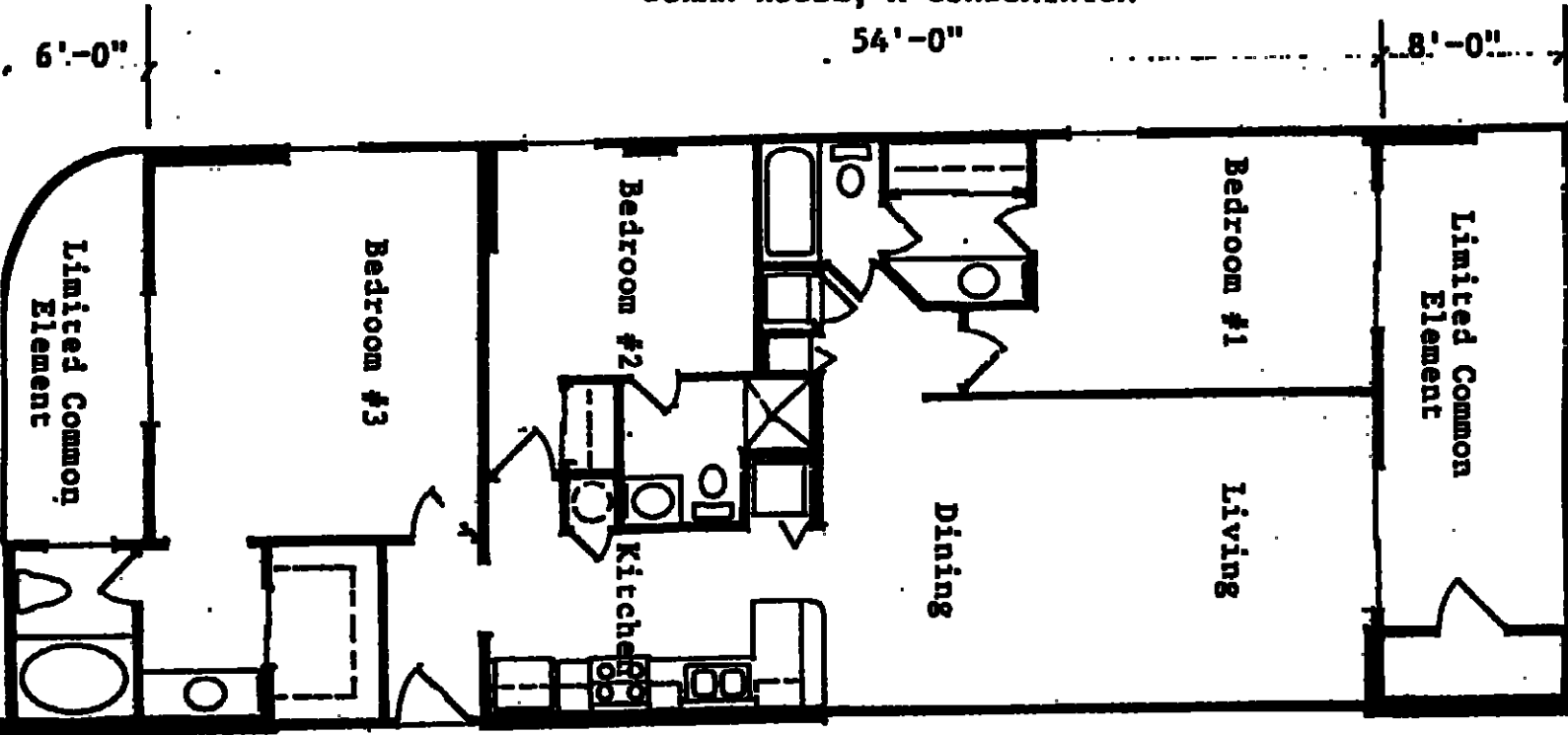


EXHIBIT "C"

page 11

Attached to Declaration of Condominium of  
OCEAN HOUSE, A CONDOMINIUM

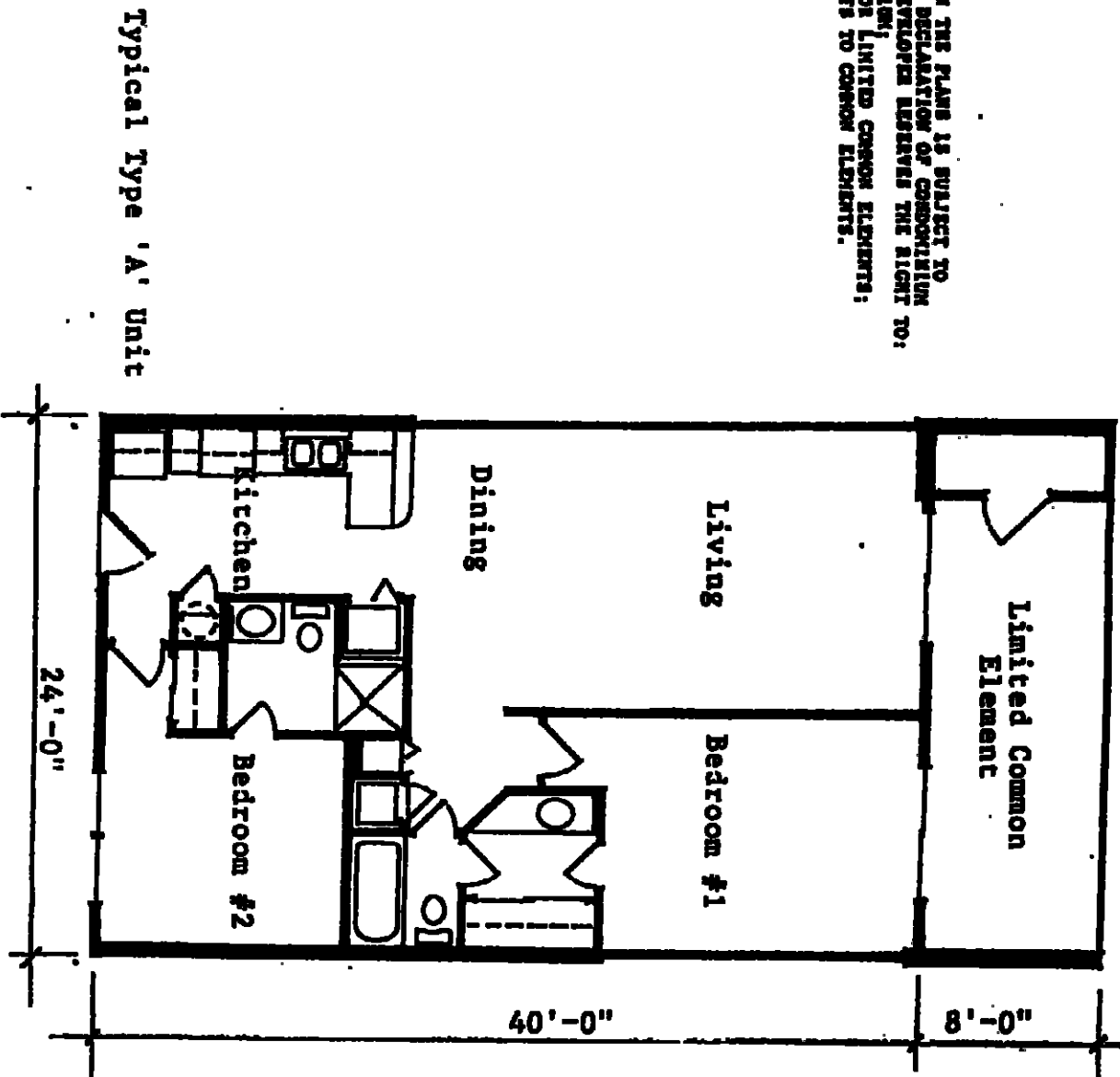


Typical Type 'B' Unit

MISC0082 PLAN 0045

ALL OF THE REAL PROPERTY DESCRIBED ON THE PLANS IS SUBJECT TO DEVELOPMENT RIGHTS AS SET OUT IN THE DECLARATION OF CONDOMINIUM OF OCEAN HOUSE, A CONDOMINIUM. THE DEVELOPER RESERVES THE RIGHT TO:

- (1) ADD REAL ESTATE TO THE CONDOMINIUM;
- (2) CREATE UNITS, COMMON ELEMENTS, OR LIMITED COMMON ELEMENTS;
- (3) RECONFIGURE UNITS, OR CONVERT UNITS TO COMMON ELEMENTS.



Typical Type 'A' Unit

PHASE I

CONDOMINIUM RESIDENTIAL TYPES A & B  
OCEAN HOUSE, A CONDOMINIUM