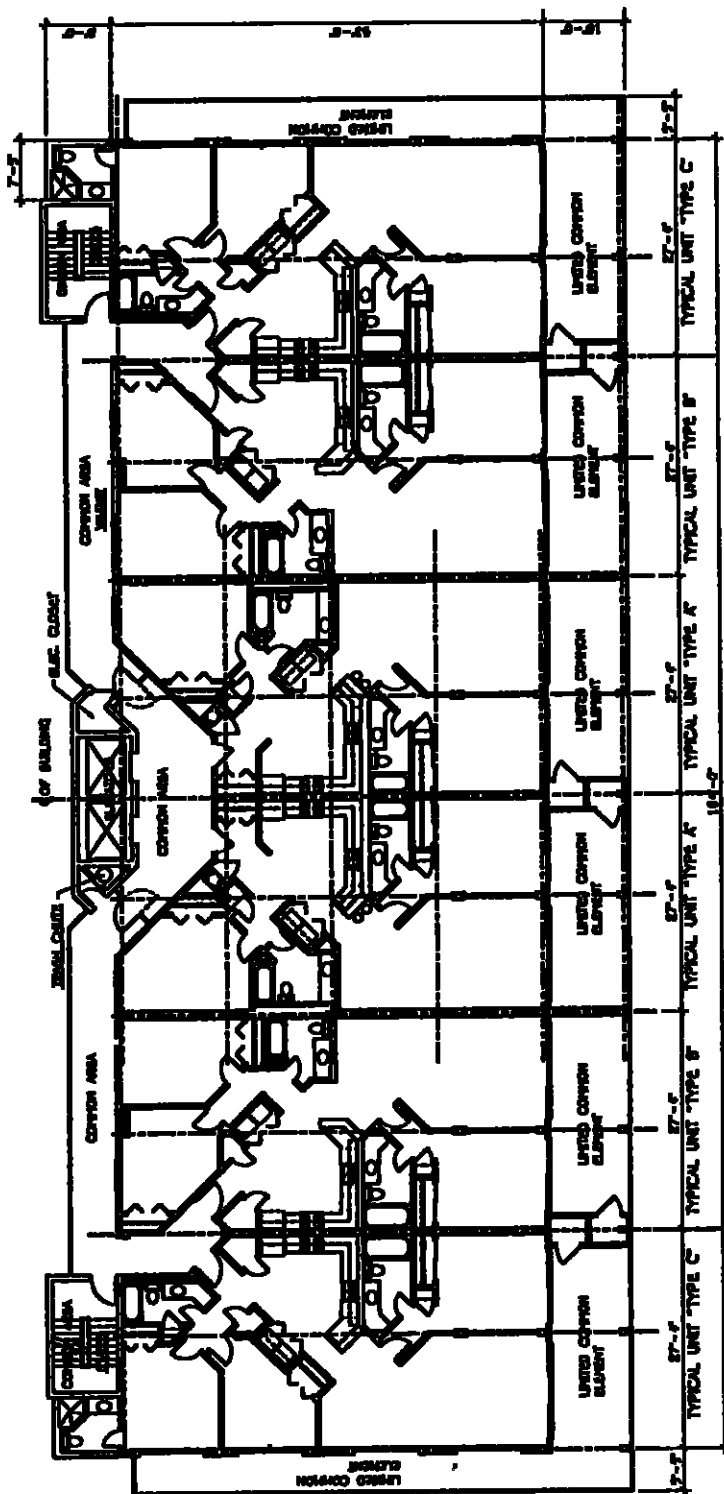


ALL OF THE REAL PROPERTY DESCRIBED ON THE PLANS IS  
 SUBJECT TO DEVELOPMENT RIGHTS AS SET OUT IN THE  
 DECLARATION OF CONDOMINIUM OF THE PALMS. A  
 CONDOMINIUM. THE DEVELOPER RESERVES THE RIGHT TO:  
 (1) ADD REAL ESTATE TO THE CONDOMINIUM;  
 (2) CREATE LIMITED COMMON ELEMENTS OR LIMITED COMMON ELEMENTS;  
 (3) SUBDIVIDE UNITS, OR CONVERT UNITS TO COMMON ELEMENTS.



10th LEVEL FLOOR PLAN PHASE I

SCALE 1/8" = 1'-0"  
 THE PALMS, A CONDOMINIUM

THE PALMS, A CONDOMINIUM