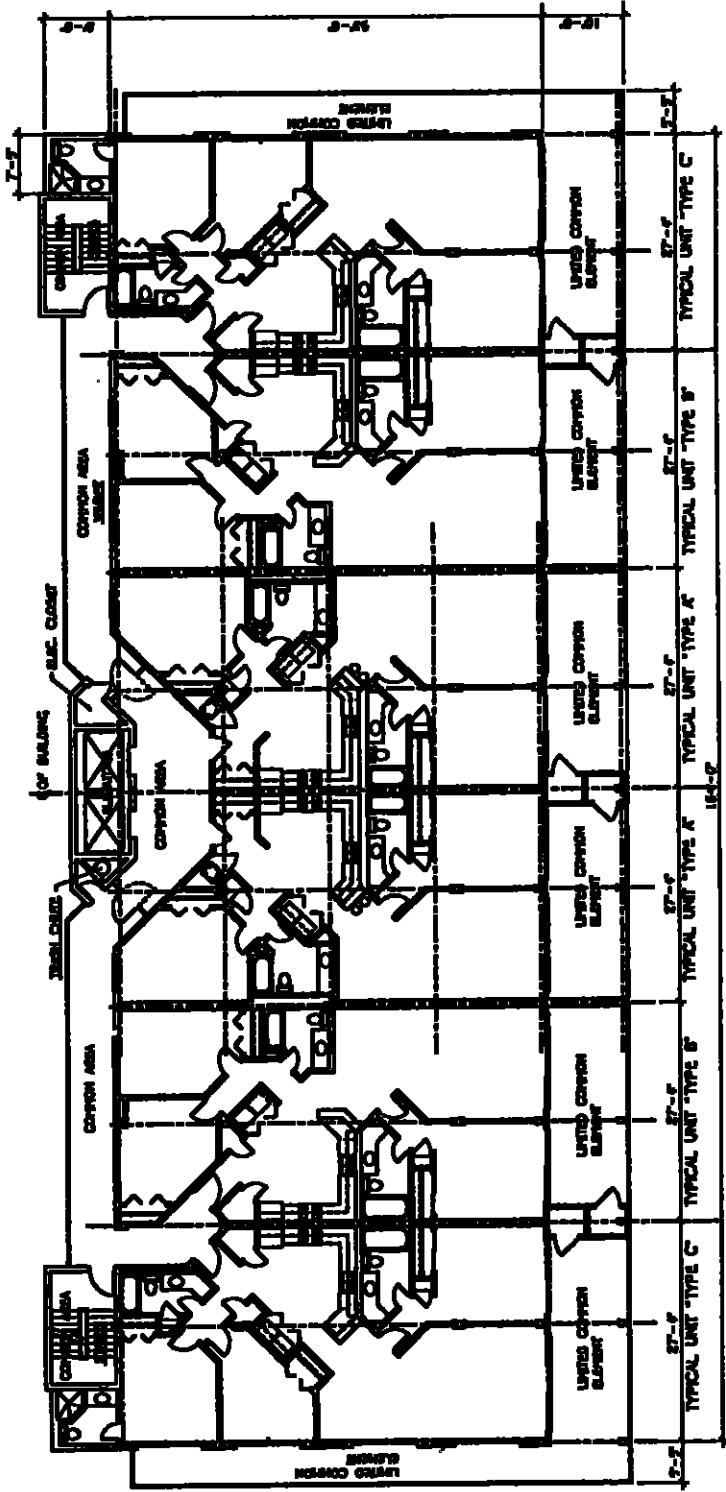


ALL OF THE REAL PROPERTY DESCRIBED ON THE PLANS IS  
 SUBJECT TO DEVELOPMENT RIGHTS AS SET OUT IN THE  
 DECLARATION OF CONDOMINIUM OF THE PALMS, A  
 CONDOMINIUM. THE DEVELOPER RESERVES THE RIGHT TO:  
 (1) ADD REAL ESTATE TO THE CONDOMINIUM;  
 (2) CREATE UNITS, COMMON ELEMENTS, OR LIMITED COMMON ELEMENTS;  
 (3) SUBDIVIDE UNITS, OR CONVERT UNITS TO COMMON ELEMENTS.



9th LEVEL FLOOR PLAN PHASE I  
 SCALE 1/8" = 1'-0"  
 THE PALMS, A CONDOMINIUM

Printed on 11/15/2011 10:00 AM