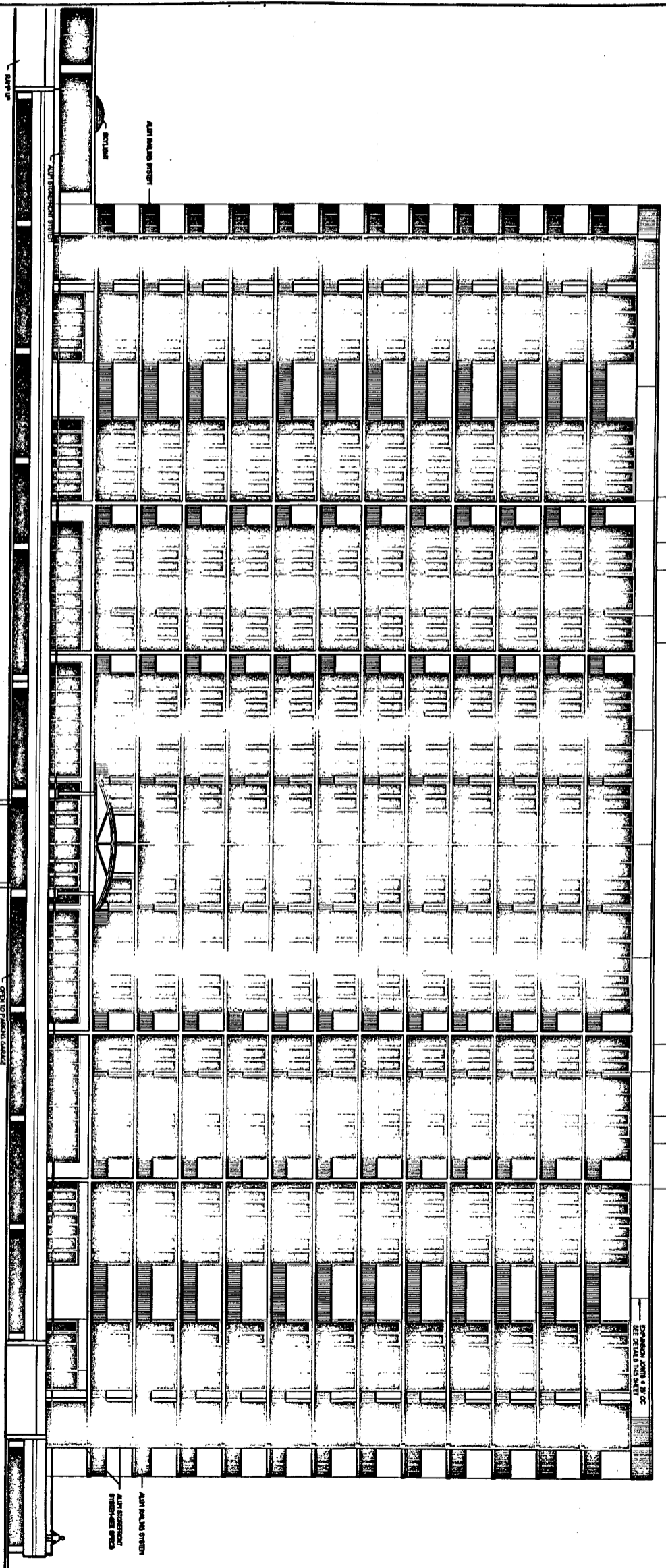


Apr. 22 19 47



SOUTH ELEVATION

© HENRY MORRIS & ASSOCIATES, INC.

THE UNDERSIGNED, HENRY MORRIS, A REGISTERED ARCHITECT IN THE STATE OF ALABAMA, REGISTRATION NUMBER 2065, PURSUANT TO SECTION 36-1-201, CODE OF ALABAMA, 1975, HEREBY CERTIFIES THAT THIS SET OF ARCHITECTURAL DRAWINGS, INCLUDING THESE PAGES 1 THROUGH 32 INCLUSIVE, ATTACHED TO AND MADE PART OF THE DECLARATION OF CONDOMINIUM OF CARIBE RESORT, A CONDOMINIUM, CONTAINS ALL INFORMATION REQUIRED BY SAID SECTION, FULLY AND ACCURATELY DENOTE THE LAYOUT, LOCATIONS, UNIT NUMBERS AND COMMON ELEMENTS IN SUFFICIENT DETAIL TO DENOTE THE COMMON ELEMENTS AND TO IDENTIFY SAID COMMON ELEMENTS AS BUILT. ELEMENTS COMPRISING SUCH UNITS OF CARIBE RESORT CONDOMINIUM, AS BUILT.

dmh
 ALABAMA REGISTRATION NUMBER 2065
 DATE 4/1/02
 SHEET 17 OF 32



HN

HENRY MORRIS & ASSOC., INC.

ARCHITECTURE & ENVIRONMENTAL DESIGN

30 N PALATKA
PENSACOLA, FLORIDA 32501

(850) 432-6011
FAX 432-2011
Henry@hmvh.com

CARIBE RESORT
ORANGE BEACH, ALABAMA

ASB ML: GREGORY
 CR: TVAL
 OCEAN: HAH
 DATE: 4/1/02
 REVISIONS:

SOUTH ELEVATION
SHEET

17

OF 32