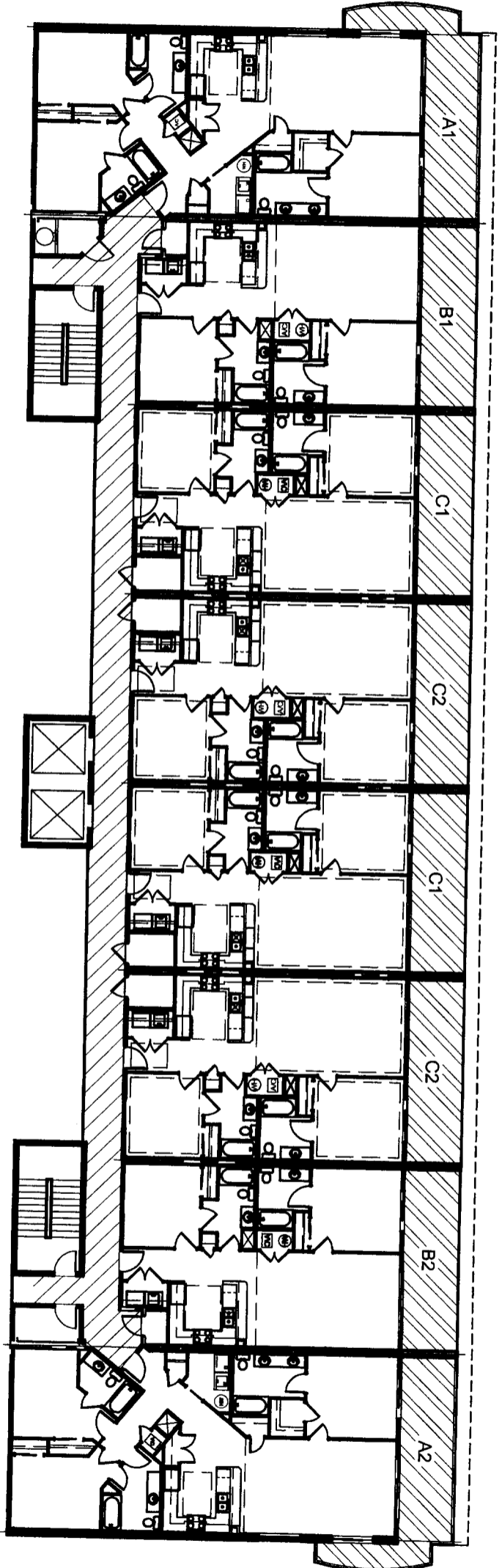


Bullock Tice Associates
 909 Bank Cervantes Suite B
 Pensacola, FL 32501
 AAC000174
 Phone: 850.434.5444

 DENOTES COMMON ELEMENTS
 DENOTES LIMITED COMMON ELEMENTS



13TH LEVEL PLAN

Exhibit "C"

CRYSTAL SHORES WEST, A CONDOMINIUM
 04/11/06
 1"=20'-0"

